



PSi Matrix Printer Options and Personality Module for Printer Families

PP 40x / PP 80x

Professional printing solutions

A publication of PSi Matrix GmbH Customer Support

Hommeseiwiese 116a
57258 Freudenberg
Germany
<http://www.psi-matrix.eu>



Pub. January, 2016

We take care that the information in this guide is accurate and complete. If errors or omissions are discovered, or a user may wish some changes, they are encouraged to make suggestions.

The content of this specification may be changed without any notice.

Copyright © by PSi Matrix GmbH.

All rights reserved. Reproduction or issue to third parties in any form whatsoever, is not permitted without written permission of the publisher.

1. Content

1. Content	3
2. Introduction	5
3. Printer Option	6
3.1 Printer Stands	7
✧ PRINTER STAND PP 40x / PP 806 / PP 809.....	7
PRINTER STAND BOARD PP806/9.....	7
PRINTER STAND BOARD PP407/8.....	7
PRINTER STAND BOARD PP404/5.....	7
PRINTER STAND BASE FRAME PP40X/PP806/9.....	7
✧ PRINTER STAND PP 803.....	8
✧ PRINTER STAND PP 204.....	8
3.2 Paper stackers, feeders and trays	9
✧ Stacker Option (for all printer types).....	9
✧ Cut Sheet Tray PP408.....	10
✧ CUT SHEET TRAY FRONT PP 803 / PP 806.....	11
✧ CUT SHEET TRAY REAR PP 803 / PP 806.....	11
✧ Paper Guide PP 404.....	12
✧ ASF Cassette A.....	13
✧ ASF Cassette B.....	14
✧ ASF Cassette C.....	15
✧ Manual Sheet Feeder PP 404 / PP 405.....	16
✧ Manual Sheet Feeder PP 803.....	16
✧ Tractor Cassette PP 407 / PP 408.....	17
✧ Tractor Cassette PP 803 / PP 806 / PP809.....	17
3.3 Sound Absorption	18
✧ Sound Cover PP 404 / PP 405 (only fanfold) / PP 407.....	19
✧ Sound Cover PP 803.....	20
✧ Sound Cover PP806 (only fanfold) / PP 809.....	21
✧ Sound Cabinet PP 404 / PP 405 (only fanfold) PP 407 / PP 408.....	22
✧ Sound Cabinet PP 803.....	23
.....	23
✧ Sound Cabinet PP 806 (only fanfold) / PP 809.....	24
3.4 Cutting devices	25
✧ Cutter PP 803.....	25
Cutter PP 803.....	25
Cut hold down spring.....	25
Cutting bar.....	25
4. Interface modules (Personality Module)	26
4.1 Standard Interfaces Modules	27



◇ Serial / Parallel / USB (only PP 40x) PP 40x / PP 80x.....	27
PM SER/PAR/USB PP40x	27
PM SER/PAR PP80x	27
4.2 Enhanced Interfaces Modules.....	28
◇ Serial / Ethernet / USB (only PP 40x)	28
PM ETH/SER/USB PP40x.....	28
PM ETH/SER PP80x.....	28
◇ Serial / Parallel / Ethernet PP 40x interface module (PNS).....	29
PM PNS ETH/SER/PAR/USB PP40x	29
◇ IPDS 4247 Emulation with Ethernet Interface	30
PM ETH/IPDS PP 40x	30
PM ETH/IPDS PP 80x	30
◇ IGP (Printronix ® 10/20/40) Emulation with Parallel or Ethernet Interface	31
PM PAR IGP PP40x.....	31
PM ETH IGP PP40x.....	31
PM PAR IGP PP80x	31
PM ETH IGP PP80x.....	31
◇ String Change Emulaion with Parallel or Ethernet Interface	32
PM PAR STGCHG PP40x.....	32
PM ETH ISTGCHG PP40x.....	32
PM PAR STGCHG PP80x.....	32
PM ETH STGCHG PP80x.....	32
◇ PJP (Printer Job Language) Emulaion with Parallel or Ethernet Interface	33
PM ETH PJP PP40x	33
PM ETH PJP PP 80x	33
4.3 Printer Languages / Emulations	34
◇ IBM ProPrinter, Epson LQ	34
◇ Tally MT50 Emulation with Serial / Parallel or Ethernet Interface	35
◇ HP 2934 / 2235 Emulaion with Parallel or Ethernet Interface.....	35
◇ DEC ANSI Emulaion with Parallel or Ethernet Interface	36
◇ Genicom (Tally) ANSI Emulaion with Parallel or Ethernet Interface.....	36



2. Introduction

The professional PSi printer families PP 40x and PP 80x are based on a matured and green technology and convince by a long terms reliability.

They fulfil a broad range of specific application requirements and are the most cost effective and flexible printers available in the market.

This catalogue contains an overview of the various options and system interfaces (PM) for the PSi matrix printer families PP 40x and PP 80x. All these options and PMs allow to use PSi matrix printers in different applications and host environments under optimum conditions in terms of user-friendliness and optimal system integration.

PP 40x Family:



PP 80x Family:



3. Printer Options

Not only within printers, but also outside the guiding of paper is an important aspect for the reliable printing task. A correct feeding of single sheets, continuous paper or multi-layer-form-sets is important for the best print quality result. Just as important is a proper way to stack the printed pages. Adequate paper trays may lead to overall best print results.

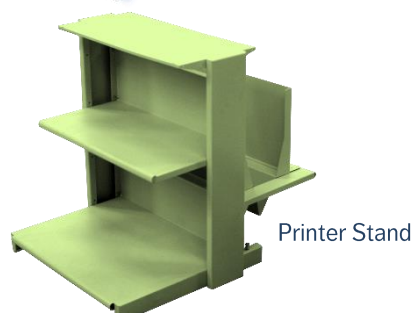
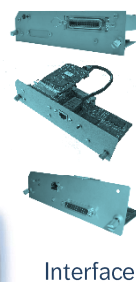
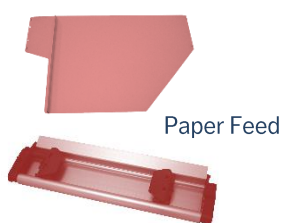
With an optional stand PSi matrix printers offer the guarantee of a reliable location and proper functionality of paper management. All integrated paper paths allow the best possible transport of the paper. Without operator intervention paper paths can be changed. Several output options are available to deposit fanfold or cut sheet paper. Specific designed shelves or output trays are supported, so that even heavy form sets are stored properly. Depending on the choice and type of printer this either can be done to the front or to the rear. For the proper storage of continuous paper an optional stacker is available, guaranteeing continuous paper is stores correctly folded.

Complete printer solutions for professional use.

In combination with optional paper feed and paper tray systems, users get individual and specially tailored printing solutions. That ensure smooth running of various printing jobs.

These include:

- Printer specific paper feeding mechanisms
- Paper output systems optimized for specific applications
- Robust printer stands for secure mounting and ergonomic operation
- Paper cut functions to separate print jobs or print portions
- Interface modules for connections to almost every host system
- Compatible printer emulations supplementing or exchanging existing printer environments

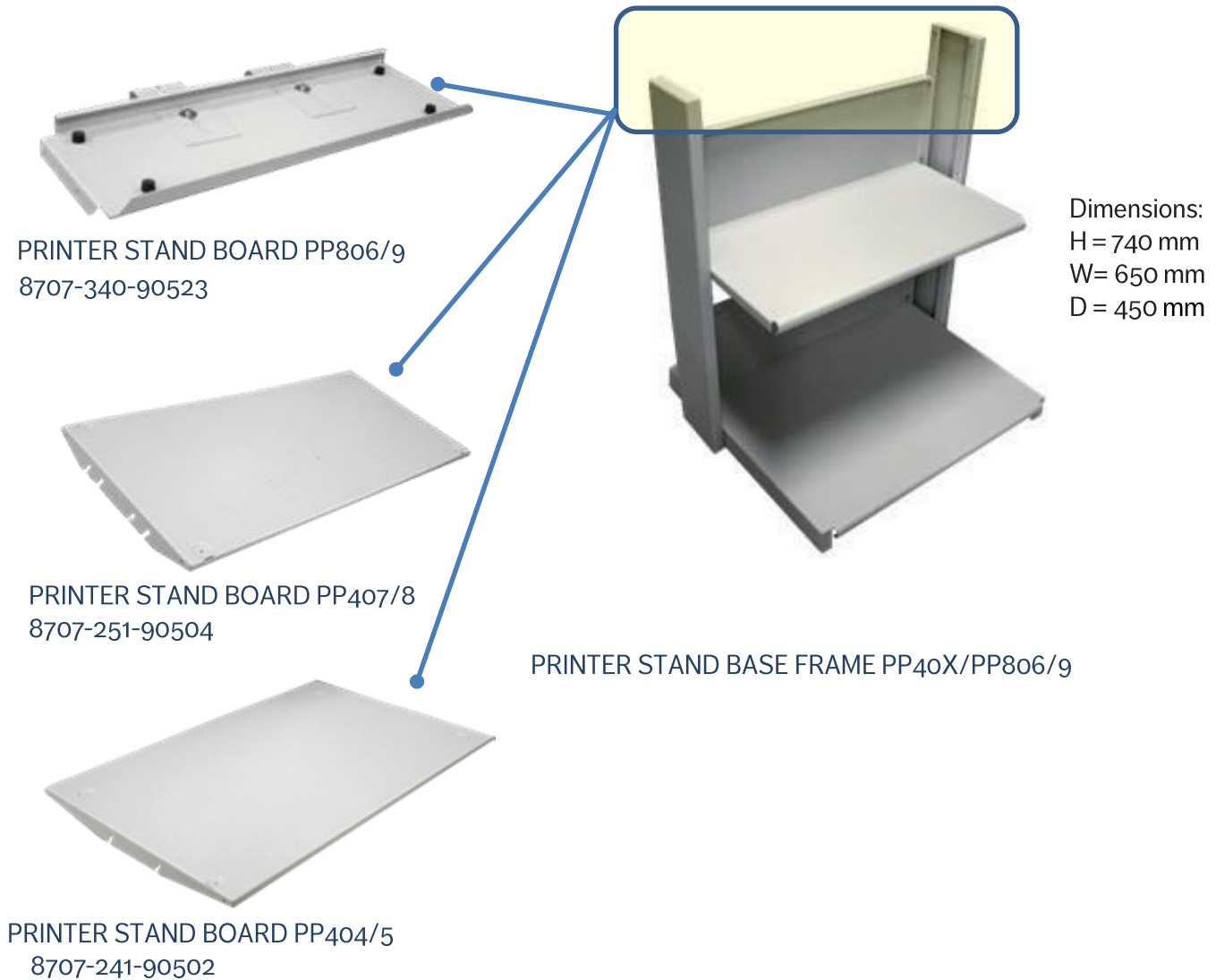




3.1 Printer Stands

PSi Matrix has a new printer stand concept consisting of a PRINTER STAND BASE FRAME and the respective PRINTER STAND BOARD for PP 404/5/7/8 und PP 806/9

✧ PRINTER STAND PP 40x / PP 806 / PP 809



PSi Matrix delivers a combination of PRINTER STAND BASE FRAME and the respective PRINTER STAND BOARD under a complete PRINTER STAND with following order numbers:

Order number:	PP 404/5, PP 407/8, PP 806/9
8707-241-90502	PRINTER STAND PP404/5 NEW
8707-251-90504	PRINTER STAND PP407/8 NEW
8707-340-90523	PRINTER STAND PP806/9 NEW



❖ **PRINTER STAND PP 803**

For PP 803 exists a complete stand.

Dimensions:
H = 740 mm
W = 470 mm
D = 450 mm



Order Number: PP 803
8707-330-90502 PRINTER STAND PP803

❖ **PRINTER STAND PP 204**



Dimensions:
H = 270 mm
W = 410 mm
D = 390 mm



Order Number: PP 204
8707-204-90501 PRINTER STAND PP204

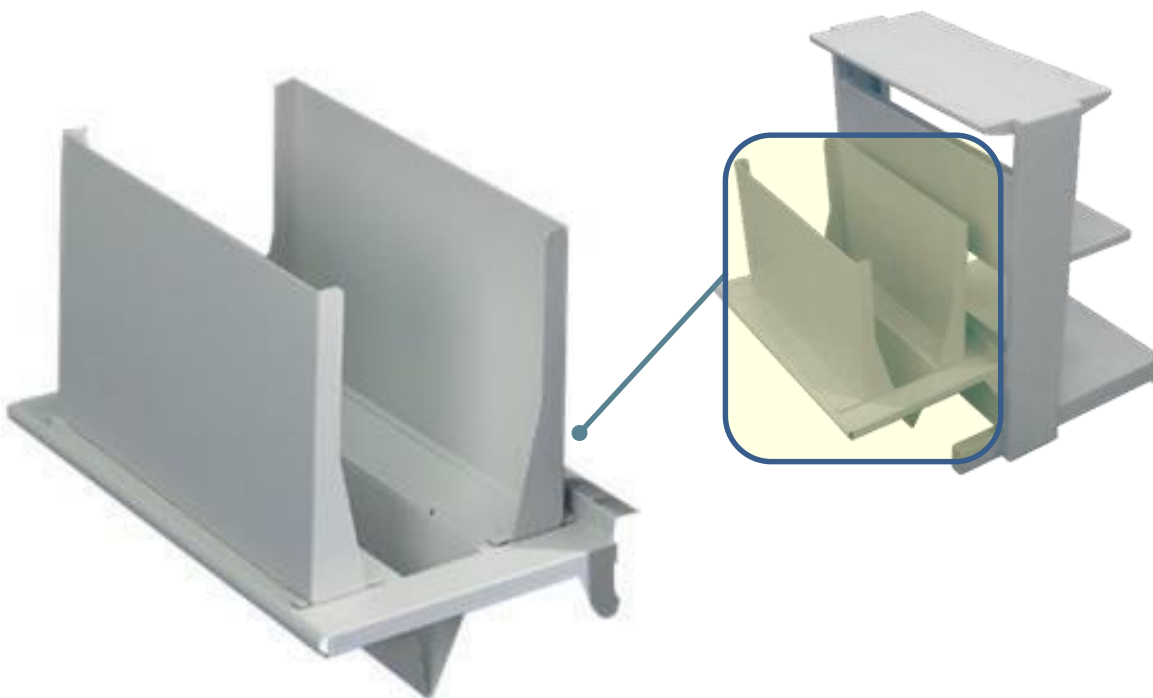


3.2 Paper stackers, feeders and trays

For the proper storage of continuous or single sheet printed papers or cut sections optional paper filing systems are available.

✧ **Stacker Option** (for all printer types)

Stacker Option: Exact paper stack of continuous paper. Capacity up to 5,000 sheets.



Order Number:
8707-340-90513

PP 40x/ PP 806/9
STACKER OPTION 40x/PP806/809

Order Number:
8707-330-90503

PP 803
STACKER OPTION PP803



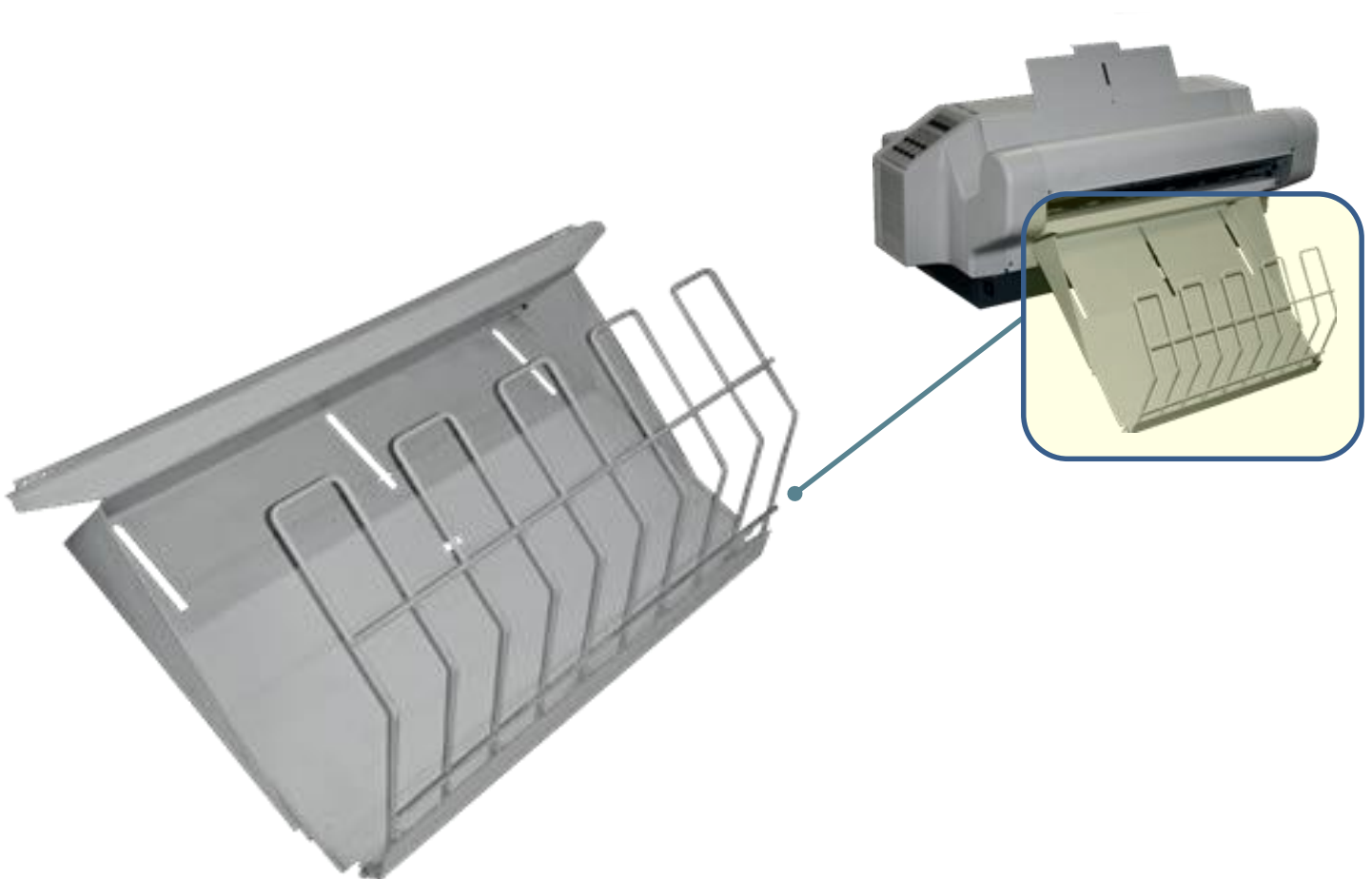
Cut sheet trays:

Cut sheet trays provide filing of printed cut endless paper or single sheets.

They are available for PP 408 to stack on rear.side and PP 803/6 to stack on front or rear.side by use of front trays the upper tractor cannot be used.

✧ **Cut Sheet Tray PP408**

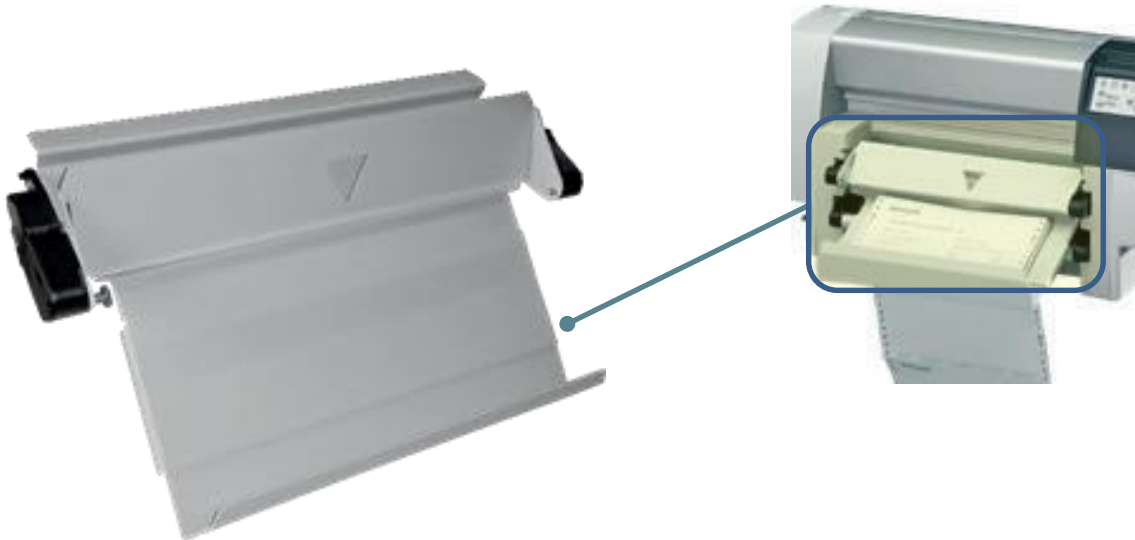
Capacity depends on paper thickness. (450 cut papers by 80 gr/m²). It simplifies removal of the papers. Output rear (face up). Variable paper length up to 14 inch.



Order Number:
8707-250-90512

PP 408
CUT SHEET TRAY 408

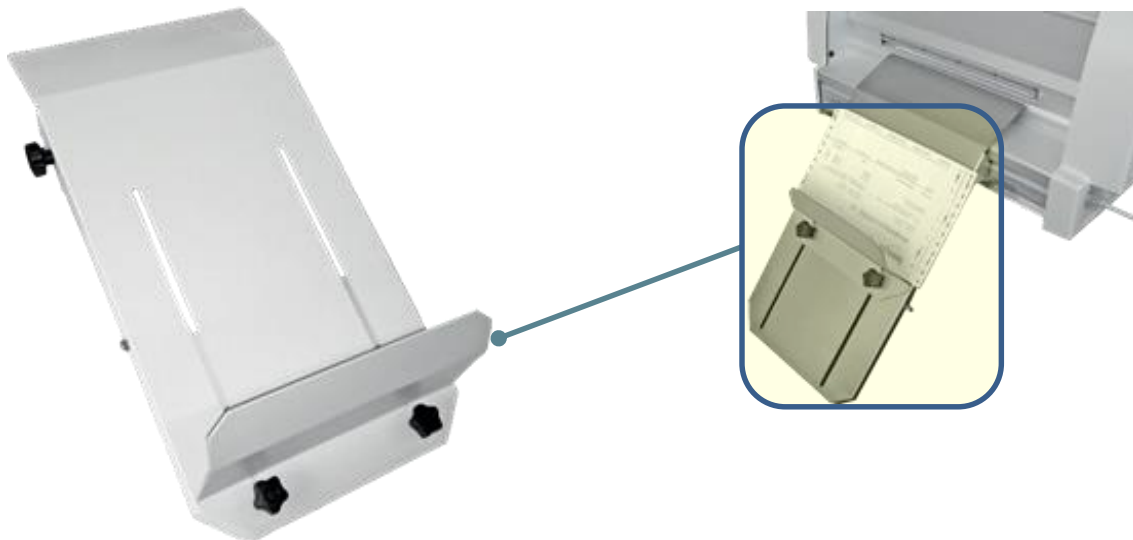
❖ **CUT SHEET TRAY FRONT PP 803 / PP 806**



Order Number: PP 803
8707-330-90505 CUT SHEET TRAY FRONT 12 INCH PP803
8707-330-90509 CUT SHEET TRAY FRONT 6 INCH PP803

Order Number: PP 806
8707-340-90511 CUT SHEET TRAY FRONT PP806

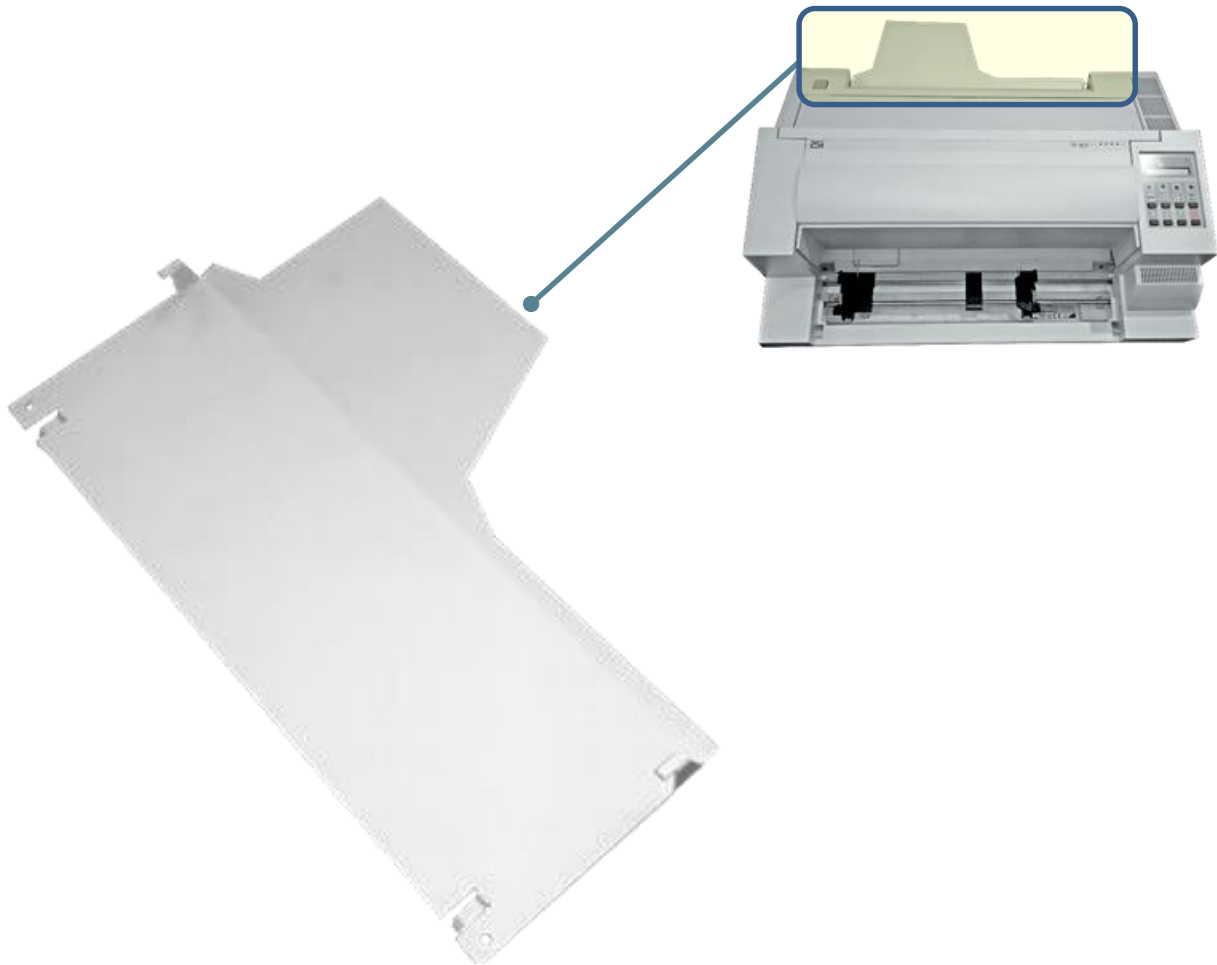
❖ **CUT SHEET TRAY REAR PP 803 / PP 806**



Order number: PP 803/6:
8707-250-90512 CUT SHEET TRAY REAR 806

✧ Paper Guide PP 404

The Paper Guide PP 404 simplifies paper tear off process. The printed paper is guided for easy removal manually on the tear off edge.



Order Number:
8707-234-90502

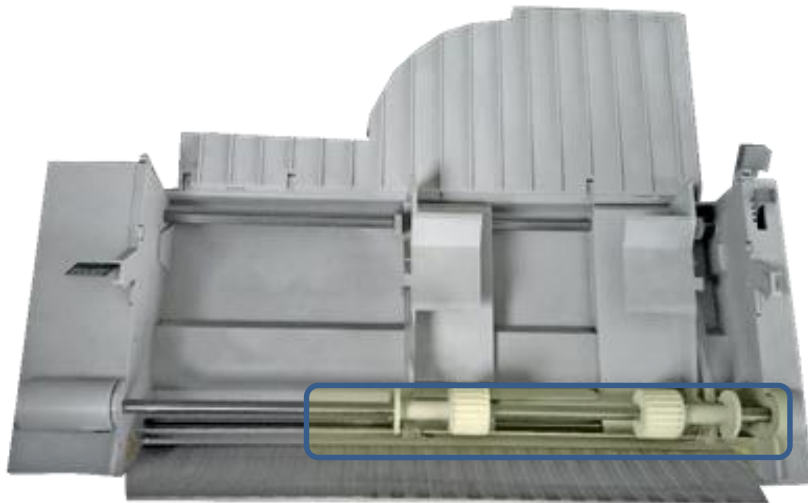
PP 404
Papierführung PP 404

Auto Sheet Feeder (ASF) Cassettes:

These options allow up to three different ASF-Cassettes (Automatic Sheet Feeder) to be mounted onto printer PP 405 or PP 806 if in addition from efficient fanfold paper processing - flexible printing of single sheets or form sets is required.

✧ ASF Cassette A

The ASF cassette A is the solution for printing of single sheets, such as delivery notes and dot glued single-form sets of up to six carbon copies. Depending on the paper weight up to 180 (80 gr/m²) sheets can be stacked.



Separating finger

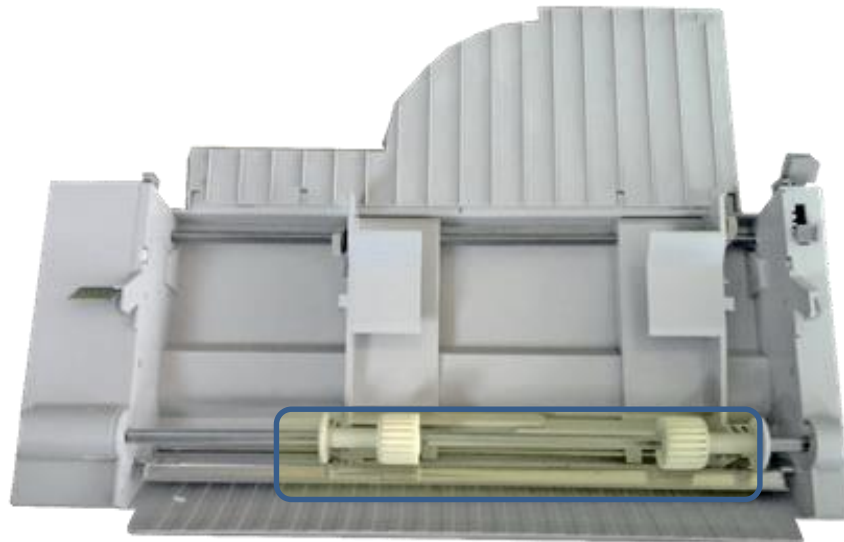


Order Number: PP 405
8707-240-91821 ASF-CASSETTE A1

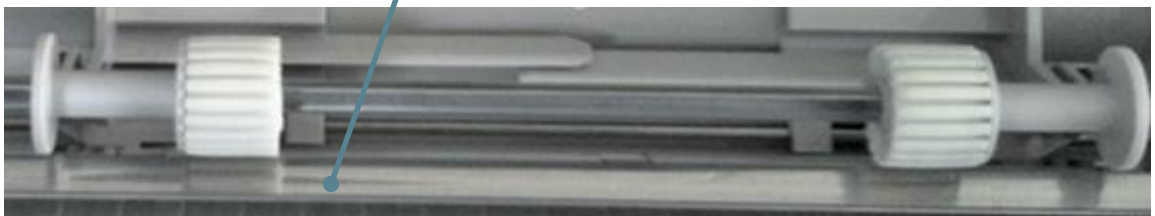
Order Number: PP 806
8707-340-90508 ASF-CASSETTE A2

❖ ASF Cassette B

The ASF cassette B performs reliably envelopes, cardboard sheets and head glued form sets up to 300 gr/m². For example the capacity for envelopes of 170 g / m² is 40 pieces.



Separating bar 120°



Bestellnummer:
8707-240-91829

PP 405
ASF-CASSETTE B1

Bestellnummer:
8707-340-90509

PP 806
ASF-CASSETTE B2

❖ ASF Cassette C

The ASF cassette C is the specialist for heavy paper, Cardboard sheets or envelopes at up to 300 g/m² and even documents with middle fold (for example work accompanying maps) are not a problem.



Separating bar 136° and 2 additional Rollers



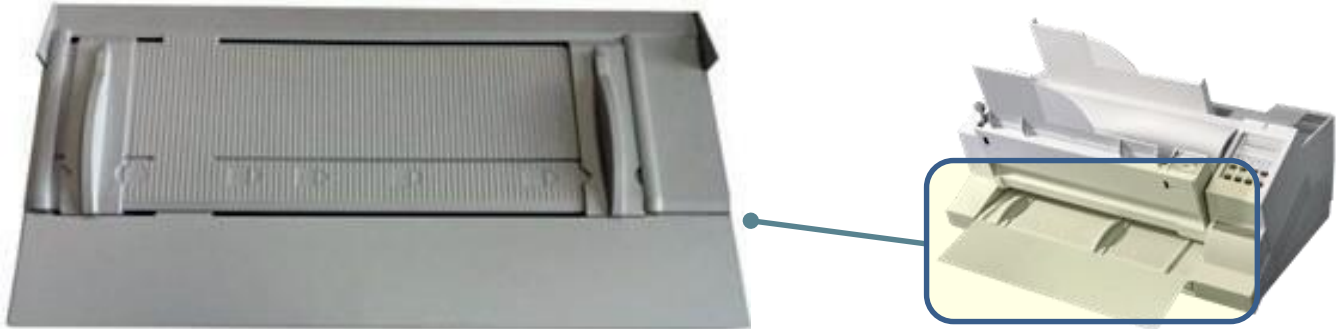
Order Number:
8707-240-91824

PP 405 / PP 806
ASF-CASSETTE C



❖ Manual Sheet Feeder PP 404 / PP 405

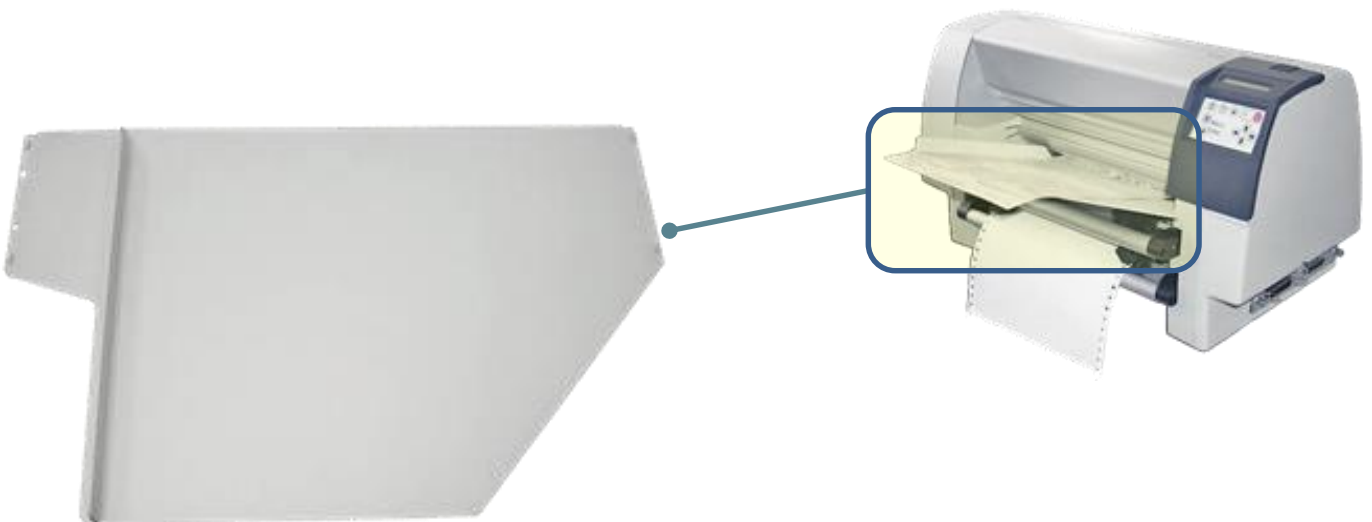
This option for PP 404 and PP 405 enables more accurate guide of manual single sheets, assuring a secure feeding. It is especially recommended if multiple feeders (ASF cassettes) are installed, since it also serves as an extension.



Order Number: PP 404 / PP 405
8709-002-70401 S/HF04 MANUAL SHEET FEDERPP404/5

❖ Manual Sheet Feeder PP 803

This option for PP 803 allows manual insertion of a single sheet.



Order Number: PP 803
8709-330-90507 MANUAL FRONT INSERTIONPP803



❖ Tractor Cassette PP 407 / PP 408

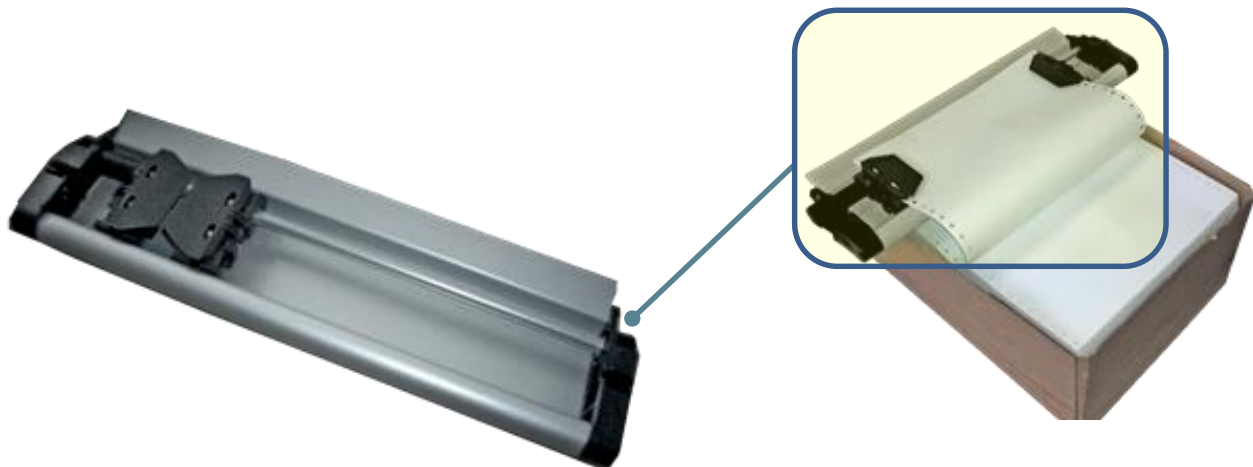
Additional tractor cassettes facilitate paper processing operation. The paper can be preloaded on the paper stack and supplied with the tractor cassette specifically at different left margins.



Order Number: PP 407 / PP408
8707-251-90501 TRAKTORKASSETTE PP 407 / 408

❖ Tractor Cassette PP 803 / PP 806 / PP809

Additional tractor cassettes facilitate paper processing operation. The paper can be preloaded on the stack and supplied with the tractor cassette.



Order Number: PP 803
8707-330-90501 TRAKTORKASSETTE PP 803

Order Number: PP 806/PP 809:
8707-340-90501 TRAKTORKASSETTE PP 806/ PP 809

3.3 Sound Absorption

Dot matrix printers produce noise because of their needle strokes on the pressure rollers or pressure bars natural sound waves. This pressure noise level mainly depends on the construction of the printer and the printed characters.

Capsuled housing forms such as the PP40x series have less sound emission to the outside than the open housing of the PP 80x series, which provides much easier access to the mechanism and thus facilitate easier removal of paper jams and reduction of service times.

Uniform character patterns produce a more constant sound while character shapes produce a broader band of different sound waves. Last but not least, the paper used has very strong influence on the generation of sound and the sound transport outwards.

To reduce the sound of the Dot Matrix Printers effectively, the use of sound-absorbing covers or cabinets are recommended. For smooth operation of the printer these are specifically designed for PSi printer families PP 40x and PP 80x. Beside a sufficient power feed and heat dissipation the paper transport should not be affected in anyway. Feeding and stacking of the paper must, even when using a sound absorption work without interferences.

PP 40x / PP 80x Series

For the family PP40x and PP 80 x PSi Matrix offers specially developed sound covers and cabinets. These are tailored to the specific printer type. They ensure a drastic reduction of the noise level up to 14 dB (A).

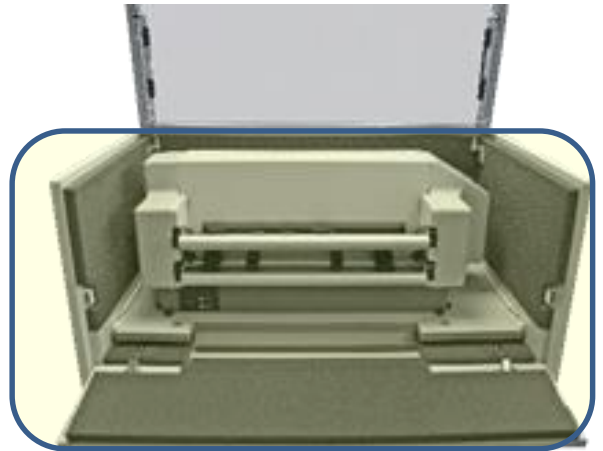
Secondly, they protect the printer against dust, aerosols and other environmental influences. A sufficient heat dissipation is ensured under all circumstances.

All sound cover and cabinets support poor fanfold applications. A transparent lid with gas springs for easy opening provides the optical control of the printer and a simple glance at the display. The sound covers are designed for desktop use or for mounting on a PSi printer stand. The mounting material for attachment to the printer stand is included in the sound cover.



❖ **Sound Cover PP 404 / PP 405 (only fanfold) / PP 407**

- Attenuation up to 10 dB (A)
- Professional design
- Paper tear-off bar
- Moveable printer tray
- Only continuous processing possible
- Installed on the printer stand
- Slots for system connections



Movable printer tray for easy ribbon installation



Sound cover mounted on printer stand



Two slots for paper in transport



Tear off bar at rear side

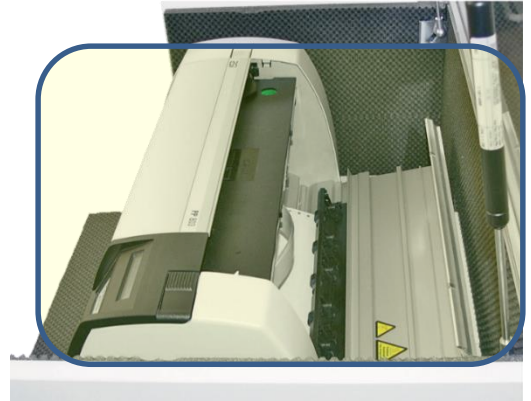
Order Number:
8709-002-60302

PP 404, PP 405, PP 407
SOUND COVER S/SC 03 PP404/405 FANFOLD / 407



❖ Sound Cover PP 803

- Attenuation up to 10 dB (A)
- Professional design
- Paper tear-off bar
- Moveble printer tray
- Only continuous processing possible
- Installed on the printer stand
- Slots for system connections



Movable printer tray for easy ribbon installation



Two slots for paper in transport



Sound cover mounted on printer stand



Tear off bar at rear side

Order Number:
8709 002 60502

PP 803
SOUND COVER S/SC 05 PP803



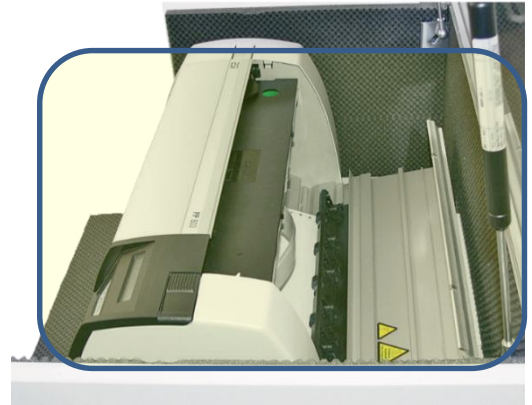


❖ Sound Cover PP806 (only fanfold) / PP 809

- Attenuation up to 10 dB (A)
- Professional design
- Paper tear-off bar
- Moveable printer tray
- Only continuous processing possible
- Installed on the printer stand
- Slots for system connections



Sound cover mounted on printer stand



Movable printer tray for easy ribbon installation



Two slots for paper in transport



Tear off bar at rear side

Order Number:
8709-002-60602

PP 806, PP 809
SOUND COVER PP806/PP809 S/SC 06

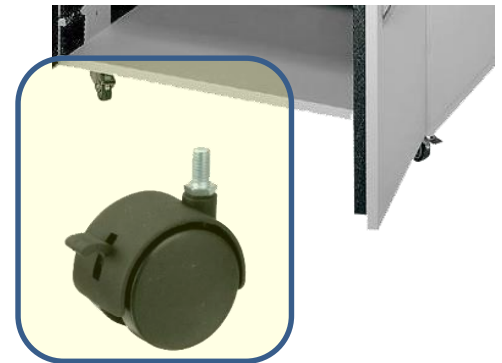


❖ **Sound Cabinet PP 404 / PP 405 (only fanfold) PP 407 / PP 408**

- Attenuation up to 14 dB (A)
- Professional design
- Fully assembled on delivery (no on-site installation)
- Supports all paper flow variants and all storage facilities of PP 404/405 only fanfold and PP 407/8
- Integrated 2 paper trays under the printer
- Paper output tray on the rear side
- Lockable castors for easy transport



2 paper trays for paperin transport



Lockable castors



Paper output tray

Order Number:
8709-002-61001

PP 404 / PP 405
SOUND CABINET PP404/405 S/SC10

Order Number:
8709 002 60901

PP 407 / PP 408
SOUND CABINET PP407/408 S/SC09



❖ Sound Cabinet PP 803

- Attenuation up to 14 dB (A)
- Professional design
- Fully assembled on delivery (no on-site installation)
- Supports all paper flow variants and all storage facilities of PP 803
- Cutting function possible
- Integrated paper tray under the printer
- Paper output tray on the rear side
- Lockable castors for easy transport



2 paper trays for paper in transport



Lockable castors



Paper output tray

Order Number:
8709 002 60701

PP 803:
SOUND CABINET PP803 S/SC 07

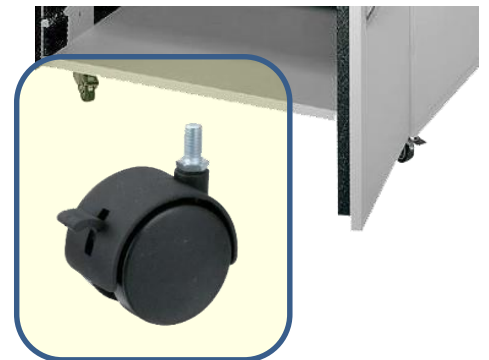


❖ Sound Cabinet PP 806 (only fanfold) / PP 809

- Attenuation up to 14 dB (A)
- Professional design
- Fully assembled on delivery (no on-site installation)
- Supports all paper flow variants and all storage facilities of PP 806/9
- Integrated paper tray under the printer
- Paper output tray on the rear side
- Lockable castors for easy transport



2 paper trays for paper in transport



Lockable castors



Paper output tray

Order Number:
8709 002 60801

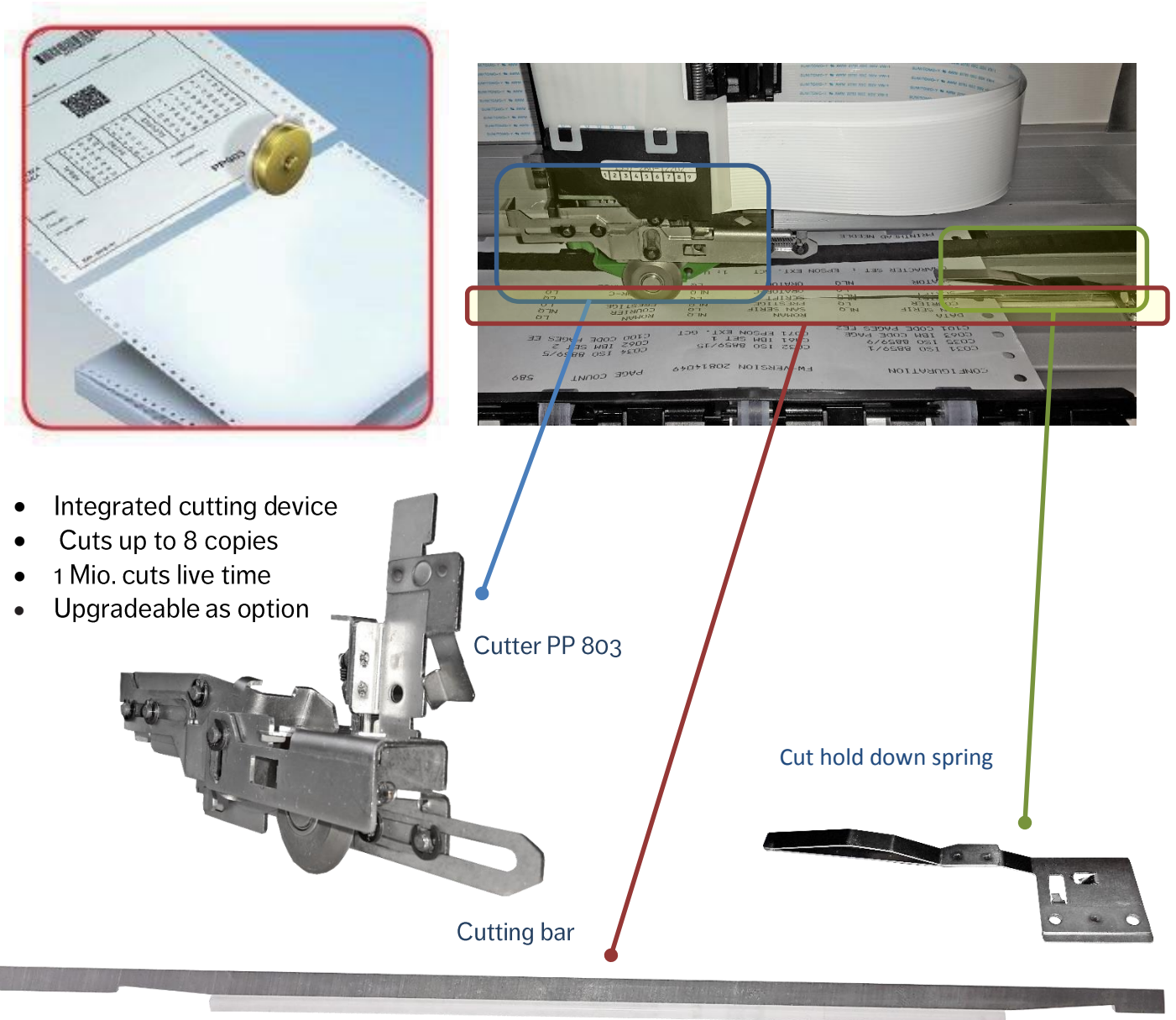
PP 806 / PP 809:
SOUND CABINET PP806/809 S/SC08

3.4 Cutting devices

This function is the door opener for many applications where automatic cutting without manual interaction is required.

❖ Cutter PP 803

An integrated cutter extends the field applications of the PP 803 that need unattended and automatic cutting of fanfold paper. Automatic output of printed documents in form of weighing documents, labels, registration or job cards are easily possible.



Order Number:
8707-330-90506

PP 803
Kit Cutter upgrade PP803



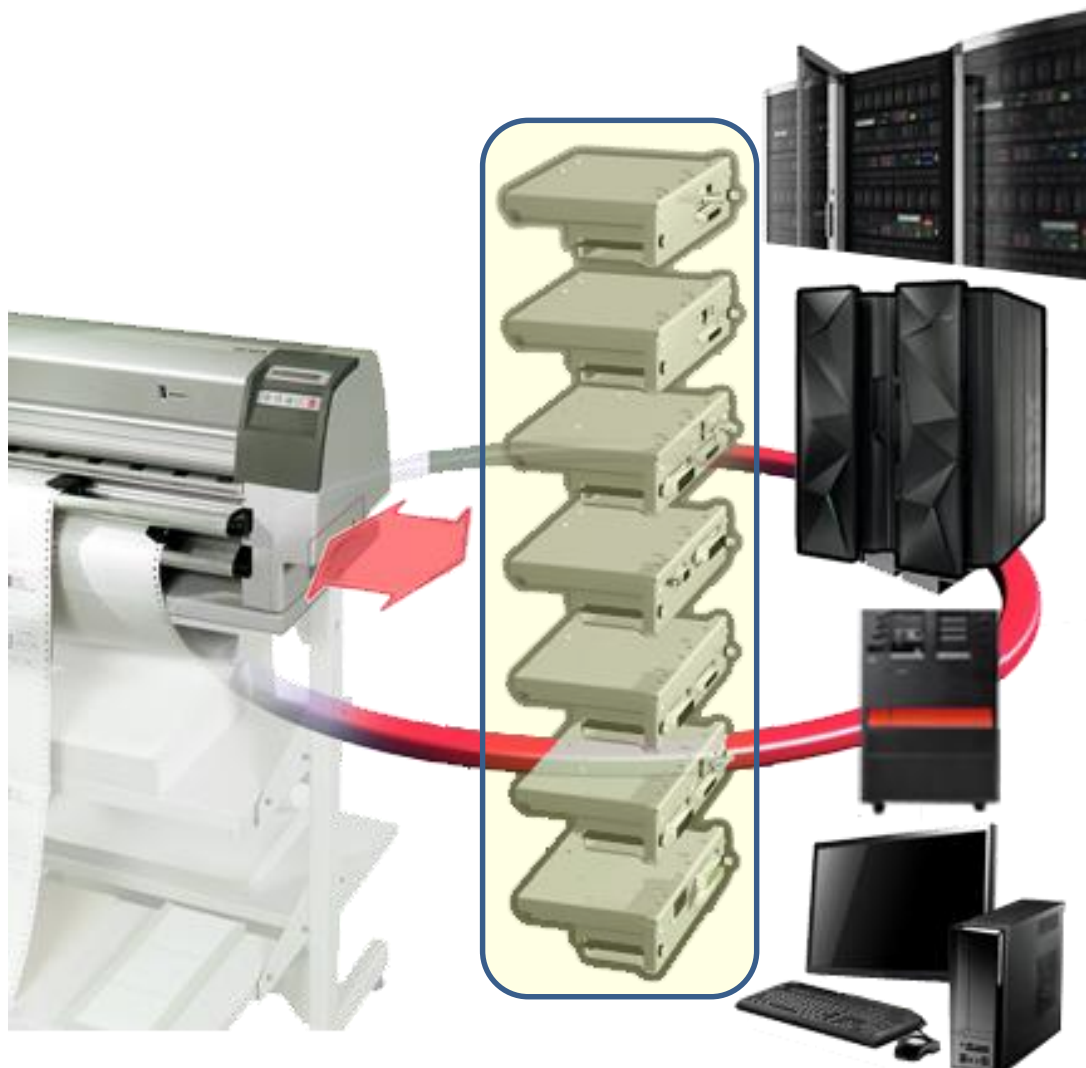
4. Interface modules (Personality Modules)

The PM consists of a metal box, which is inserted into the housing of the printer, so that the corresponding interfaces are fully integrated.

There exist interface modules for the PP 40x family and the PP 80x family. Within the family, the appropriate printer model automatically is recognized, and the specific printer parameters are loaded.

The Personality Modules provide the following advantages:

- Fully integrated interfaces without external boxes, extra cables or power supplies to improve operational reliability.
- Common interfaces for several models for easy service with less spare part variants.
- Versatile connectivity through constant expansion of PMs with new features.
- Migration options by user exchangeable new interfaces without large investments. Only the PM has to be changed, the basic printer remains the same. This results in a maximum flexibility for the user.
- All PSi Matrix interface modules have in addition to the basic emulation (HP, DEC, MT50 e.g.) always a standard IBM ProPrinter and Epson LQ emulation.





4.1 Standard Interface Modules

❖ Serial / Parallel / USB (only PP 40x) PP 40x / PP 80x

The combination of serial, parallel and USB (PP 40x only) interface is the standard Personality Module always in combination of all interfaces. These interface modules are equipped with the industrial standard emulations IBM ProPrinter and Epson LQ.

They comply with the standards:

- Parallel Centronics, (PP 40x, PP 80x)
- USB 2.0 (PP 40x)
- Serial RS-232/RS422 (PP40x=9 Pin/ HP=25 Pin) and (PP 80x=25 Pin)



PM SER/PAR/USB PP40x



PM SER/PAR PP80x

Order Number:
8707-241-90101

PP 40x:
PM SER/PAR/USB PP40x
PARALLEL IEEE1284, SERIELL RS-232 (DSUB9), USB2.0

Order Number:
8707-340-90106

PP 80x:
PM SER/PAR PP803/806/809
PARALLEL IEEE 1284, SERIELL RS-232C / RS-422 (D-SUB 25)

4.2 Enhanced Interface Modules

❖ Serial / Ethernet / USB (only PP 40x)

The connection to the Ethernet interface to integrate the PSi printer directly to LAN is provide by these PMs. They support the transmission rates 10 and 100 Mbit / s and the following network structures. These interface modules are equipped with the industrial standard emulations IBM ProPrinter and Epson LQ.

Printing Protocols and Methods

- Socket Printing / Raw TCP
- LPR/LPD Printing
- IPP v1.1 Printing
- AppleTalk Printing
- HTTP printing (encrypted and un-encrypted)
- HTTP printing (beyond Proxy Server / Internet printing)
- ThinPrint Printing
- ThinPrint SSL Printing
- FTP Printing
- NetBIOS Printing
- Novell iPrint (LPR and IPP)
- NDPS Printing (IP/IPX)
- Bindery Printing
- R/N Printing
- Ethernet 10/ 100 Network connection - RJ45 USB 2.0 (PP 40x)
- Serial / RS232 – 9pin (PP 40x) – 24pin (PP 80x)



PM ETH/SER/USB PP40x



PM ETH/SER PP80x

Order Number: 8707-241-90102
PP 40x: PM SER/USB/ETH PP40x

Order Number: 8707-340-90109
PP 80x: PM ETH 10/100 MB/S PP803/806/809



❖ Serial / Parallel / Ethernet PP 40x interface module (PNS)

Beside others the PNS-PM allows the user to connect the printer to the Ethernet according to the Ethernet 10/100 standard. The total configuration and administration of the printer inclusive macro definitions can be displayed and modified via web browser. This interface module is equipped with the industrial standard emulations IBM ProPrinter and Epson LQ.

Printing Protocols and Methods

- Ethernet 10/ 100 Network Connection - RJ45
- (IP, Subnet Mask and Gateway can be setup via Operator Panel, static or via DHCP)
- Parallel / IEEE1284 - 36 Pin
- USB 2.0
- Serial / RS232 – 9pin
- Socket Printing / RAW TCP
- LPR/LPD Printing



PM PNS ETH/SER/PAR/USB PP40x

Order Number:
8707-241-90119

PP 40x:
PM SER/PAR/USB/ETH PP40x



❖ IPDS 4247 Emulation with Ethernet Interface

PrintGuide™ is a registered trademarks of MPI Tech
 HP Web Jetadmin is a Hewlett Packard software product

Function:

Multisession / multi-protocol support, dynamic PC printer sharing, Pre, Post and character replacement (String Change), Firmware upgradeable via Print Guide™, password protection. SCS / DCA functions: MPI Tech FSL Facility, advanced fonts, variable page sizes, automatic page orientation, generation of paper sizes, internal barcode generation, MPI Tech PSS / EPM AFP Software Support

IPDS Function:

Full IPDS support, 2D barcode, exact page application, offset functions. IBM 4247 Fonts, downloadable Fonts IPDS.

- IBM 4247 compatible
- SCS / DCA-Support with TN3270/5250 and FSL support
- Plug'n Print
- supports IPP (Internet Printing Protocol)
- Printer Management Webbrowser, PrintGuide™ and HP Web Jetadmin



PM ETH/IPDS PP 40x



PM ETH/IPDS PP 80x

Order Number:
8707-241-90124

PP 40x:
PM IPDS ETH M PP40x

Order Number:
8707-340-90150

PP 80x:
PM IPDS ETH M PP80x



❖ IGP (Printronix® 10/20/40) Emulation with Parallel or Ethernet Interface

IGP and Printronix are registered trademarks of Printronix, Inc.

The PM PAR IGP (Personality Module parallel with Integrated Graphic Processor) is equipped with either a parallel interface or an Ethernet interface.

One of the industrial printer language is IGP. An emulation for efficient processing of graphics: boxes, lines, variable barcodes, rotated characters, logos, reverse printing "white on black" - all this is possible in a very fast print speed, but only a low data rate is required.

Traditionally, especially line printer would be used IGP. However, an interesting alternative is that of matrix printers, since they allow the user to print high quality and above all cost-effective at comparable speeds. The following PMs the use of PSi printers in these applications is no problem:



PM PAR IGP PP40x



PM PAR IGP PP80x



PM ETH IGP PP40x



PM ETH IGP PP80x

Order Number:
8707-241-90108
8707-241-90109

PP 40x:
PM PAR IGP PP40x
PM ETH IGP PP40x

Order Number:
8707-340-90122
8707-340-90123

PP 80x:
PM PAR IGP 80x
PM ETH 10/100 IGP 80x



✧ String Change Emulation with Parallel or Ethernet Interface

PSi Matrix offers a Personality Module with a generic string change functionality. The background is to replace legacy printers without changing the host system environment. The string change module translates existing data streams to be printed into those that are compatible with the supported emulation of the printer.

The translation program can either be developed by our sale partner or can be ordered at PSi Matrix. It protects the investment of our distribution partners for the printer families PP 40x and PP 80x.

General: to change a string is to change an incoming string so that the output conforms to the printer the appropriate emulation.

Function: change control commands to delete or add, delete unwanted characters or chains from the data stream.



PM PAR STGCHG PP40x



PM PAR STGCHG PP80x



PM ETH ISTGCHG PP40x



PM ETH STGCHG PP80x

Order Number:
8707-241-90110
8707-241-90111

PP 40x:
PM PAR STRING CHANGE PP40x
PM ETH STRING CHANGE PP40x

Order Number:
8707-340-90127
8707-340-90128

PP 80x:
PM PAR STGCHG 80X MT50
PM ETH 10/100 STGCHG 80X MT50

MT50 is a registered trademark of TallyGenicom



❖ PJP (Printer Job Language) Emulation with Parallel or Ethernet Interface

PJP function: PJP was developed by Hewlett-Packard to mainly read the current status of the printer from host computers. Software programs can remotely control the printer via PJP. This is used for monitoring and acknowledgment of print jobs. PSi has implemented some of the most important commands to their dot matrix printer.

Implemented Status Codes and Display Messages

CODE	ENGLISH DISPLAY MESSAGE	GERMAN DISPLAY MESSAGE
10001	READY	BEREIT
10002	OFFLINE	STOP
40021	OVER OPEN	DECKEL OFFEN
40022	PAPER JAM	PAPIERSTAU
41000	LOAD TRACTOR	TRAKTOR LADEN
41100	LOAD BIN	KAS. LADEN
50000	HARDWARE ERROR	HARDWARE FEHLER



PM ETH PJP PP40x



PM ETH PJP PP 80x

PM StringChange can be combined with other functions such as PJP or and IGP. The following PMs support the use of PSi printers in these fields of applications.

Order Numbers:
8707-241-90114

PP 40x:
PM ETH/USB PJP STGCHG PP40x

Order Numbers:
8707-340-90142
8707-340-90143
8707-340-90144
8707-340-90145

PP 80x:
PM ETH 10/100 MB/S PJP PP80x
PM ETH 10/100 MB/S PJP STGCHG PP80x
PM ETH 10/100 MB/S PJP IGP PP80x
PM ETH 10/100 MB/S PJP STGCHG IGP PP80x



4.3 Printer Languages / Emulations

✧ IBM ProPrinter, Epson LQ

ProPrinter is a registered trademarks of the International Business. Machines
EPSON LQ is a registered trademark of Seiko Epson Corporation.

To provide the connection of PSi printers to a wide range of host and system environments, fonts and commands are essentially based on two de facto standards in the dot matrix printer market, the IBM ProPrinter and Epson LQ emulations with IBM code page Epson extended and the ISO character sets. The standard interfaces modules contain these emulations and fonts.

Order Number:	PP 40x:
8707-241-90101	PM SER/PAR/USB PP40x
8707-241-90102	PM SER/USB/Ethernet
8707-241-90119	PM PNS ETH/SER/PAR/USB

Order Number	PP 80x:
8707-340-90106	PM SER/PAR PP803/806/809
8707-340-90109	PM ETH 10/100 MB/S PP803/806/809

Over the last decades a lot of additional printer product have been established that are not available any longer. Replacing such products also means recreating lots of emulations. Therefore, also other emulations, enabling a plug-and-play replacement in existing installations are available for PSi printers.

❖ Tally MT50 Emulation with Serial / Parallel or Ethernet Interface

Tally MT50 is a registered trademark of TallyGenicom

Emulation of Tally MT printers by the PP 80x line, preferably the PP 803 C, which has, like the Tally MT50 an integrated cutter. In addition, however, the PP 803 has not only more power and diverse connectivity options but also many possibilities for paper feed and output.

PSi Matrix offers two Personality Module to the specific MT 50 emulation. These are based on the existing serial / parallel or Ethernet PM.

The MT-emulation is available in the following configurations:

Order Number:	PP 80x:
8707-340-90116	PM SER/PAR MT50 PP80x
8707-340-90117	PM ETH 10/100 MB/S MT50 PP80X

❖ HP 2934 / 2235 Emulation with Parallel or Ethernet Interface

HP name and logo are trademarks of the Hewlett Packard

For the former HP printer HP 2934 and HP 2235 PSi Matrix offers a wide range of compatible printer models, based on the HP emulations (PCL2 / 3). Since the original HP products are hardly available in the market, also for those printers.

The following PMs are available with HP emulation:

Order Number:	PP 40x:
8707-241-90104	PM SER/PAR/USB HP PP40x
8707-241-90105	PM SER/USB/ETH HP PP40x
Order Number:	PP 80x:
8707-340-90105	PM SER/PAR HP PP803/806/809
8707-340-90114	PM ETH 10/100 MB/S HP PP803/806/809



❖ DEC ANSI Emulation with Parallel or Ethernet Interface

DEC name and logo are trademarks of the Digital Equipment Corporation

DEC (Digital Equipment Corporation) dot matrix printer with ANSI character set have also been distributed in large quantity in the past. There is a strong demand for compatible printers which can be realized with the following PMs:

Order Number:	PP 40x:
8707-241-90106	PM SER/PAR/USB DEC-ANSI PP40x
8707-241-90107	PM SER/USB/ETH DEC-ANSI PP40x

❖ Genicom (Tally) ANSI Emulation with Parallel or Ethernet Interface

Tally and TallyGenicom name and logo are registered trademarks of TallyGenicom

Even users of older Genicom products that are no longer available in the market today, look for alternative solutions with other providers such as the PSi Matrix. To cover this potential market successfully, the following PMs Serial / Parallel Interface and Genicom ANSI emulation for the PP 40x and the PP 80x products are available:

Order Number	PP 40x:
8707-241-90112	PM SER/PAR/USB GENICOM PP40x
8707-241-90122	PM SER/USB/ETH GENICOM PP40x
Order Number	PP 80x:
8707-340-90124	PM SER/PAR GEN PP803/PP806/809
8707-340-90140	PM ETH 10/100 MB/S GEN PP80X