

32-bit printer driver problem on a Windows Server 2008 R2

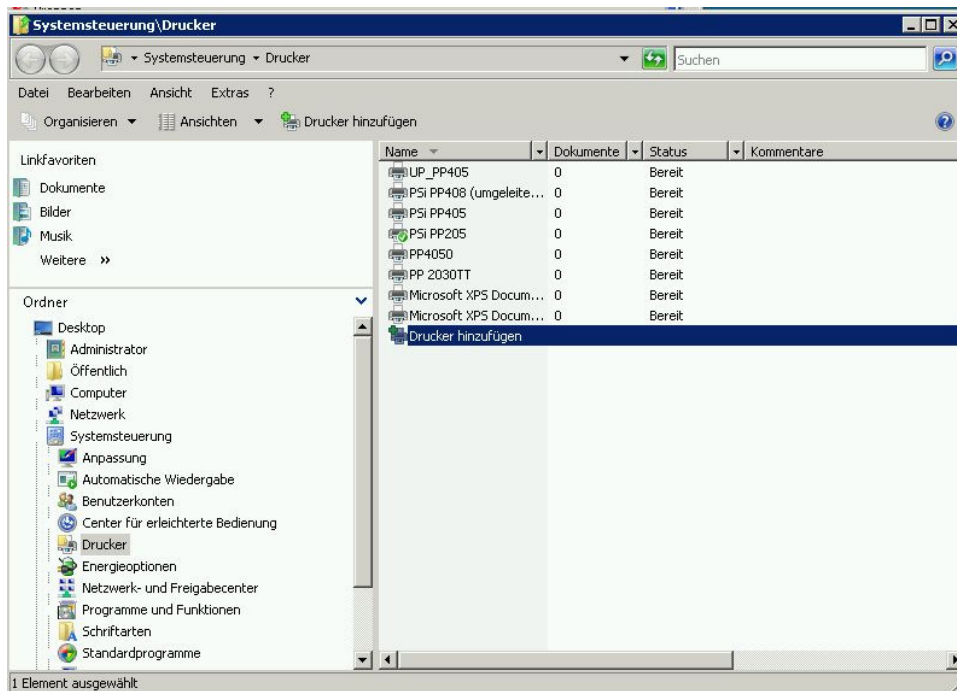
When installing an additional printer driver on x86 64-bit Windows 2008 R2 comes a specifying driver message: "Path to the Windows Media (x64 processor)." It is asking for a "ntprint.inf" file. For this you can use a small Workaround.

The following procedure is recommended.

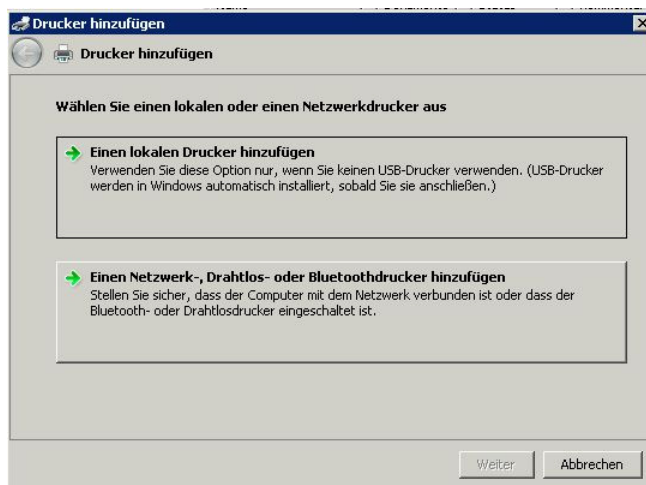
Download and unzip the driver package on the server.

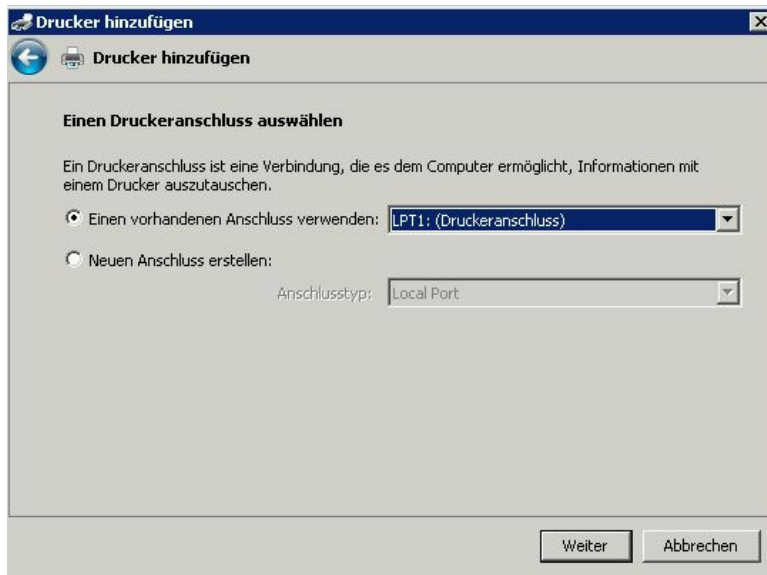
Installing the 64 printer driver on the server.

Control Panel \ Printers \ Add Printer

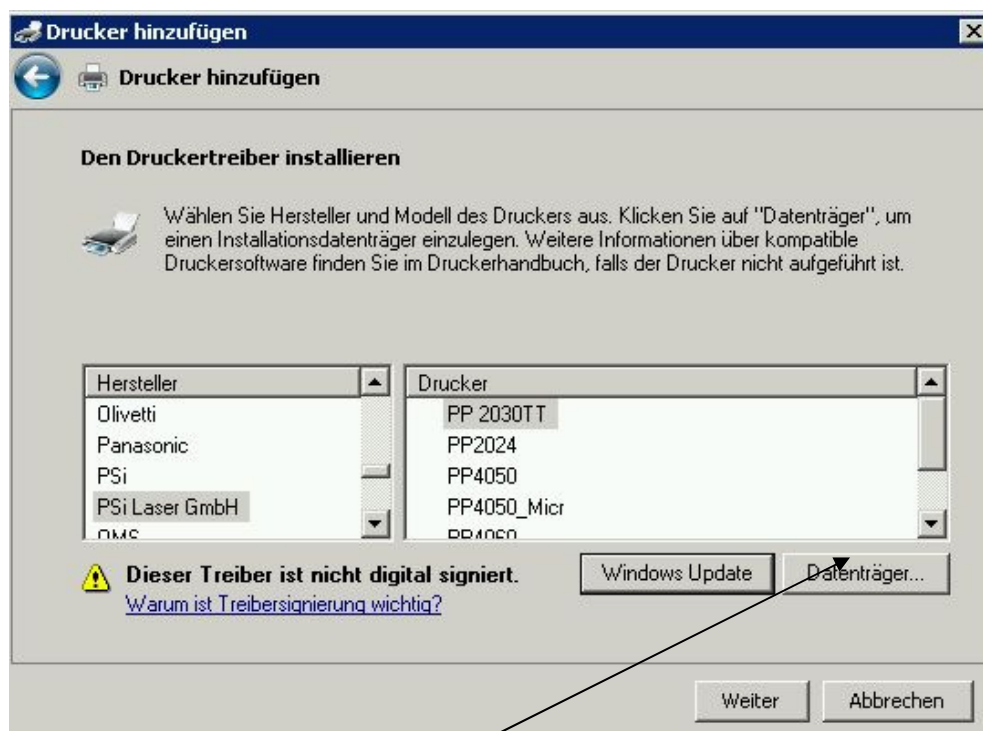


First, create a local printer

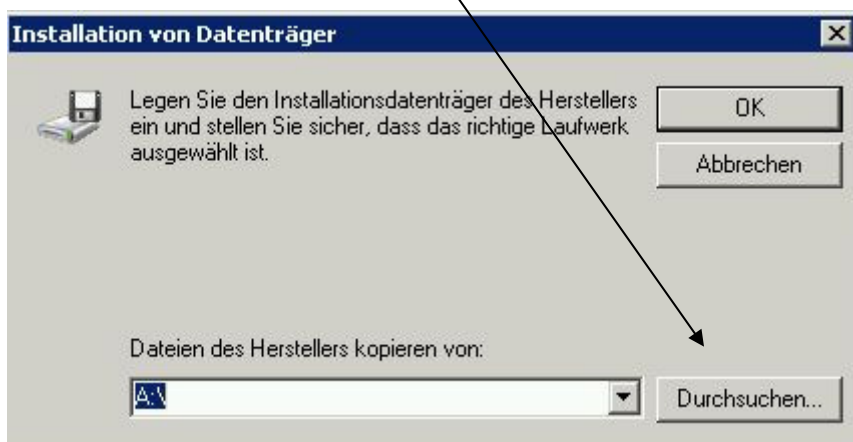


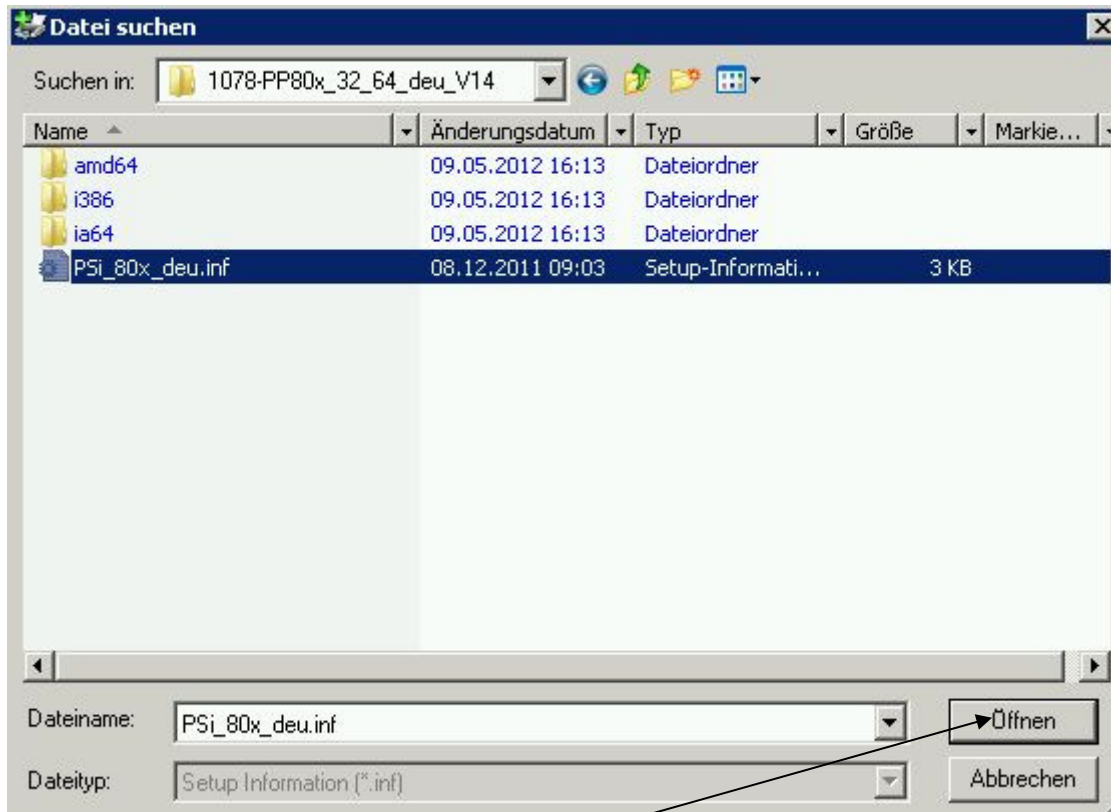


The port can be changed later.

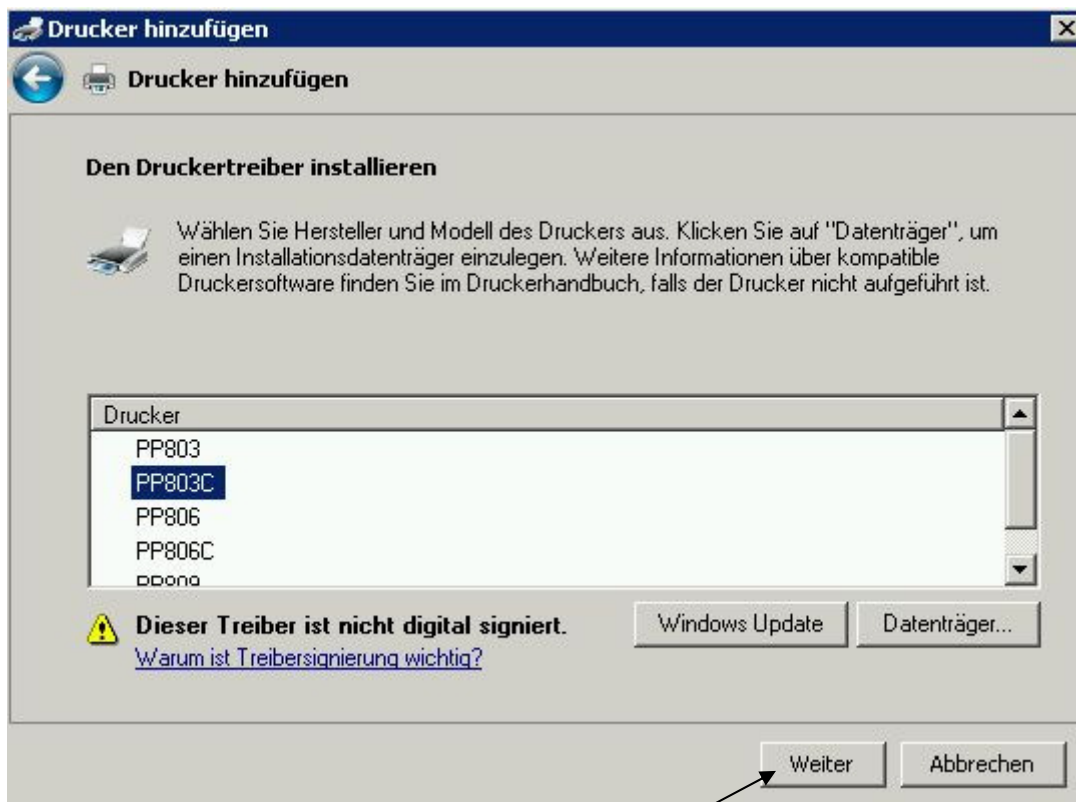


Click on Disk and point to the path of the unpacked driver package..

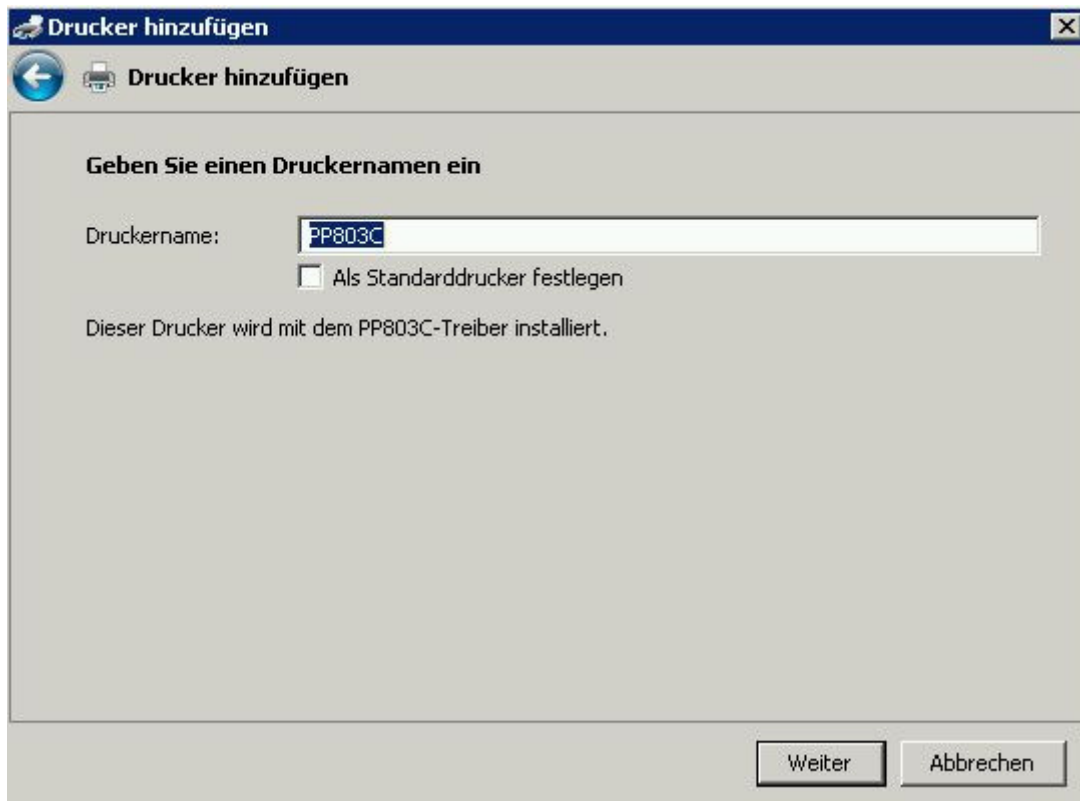




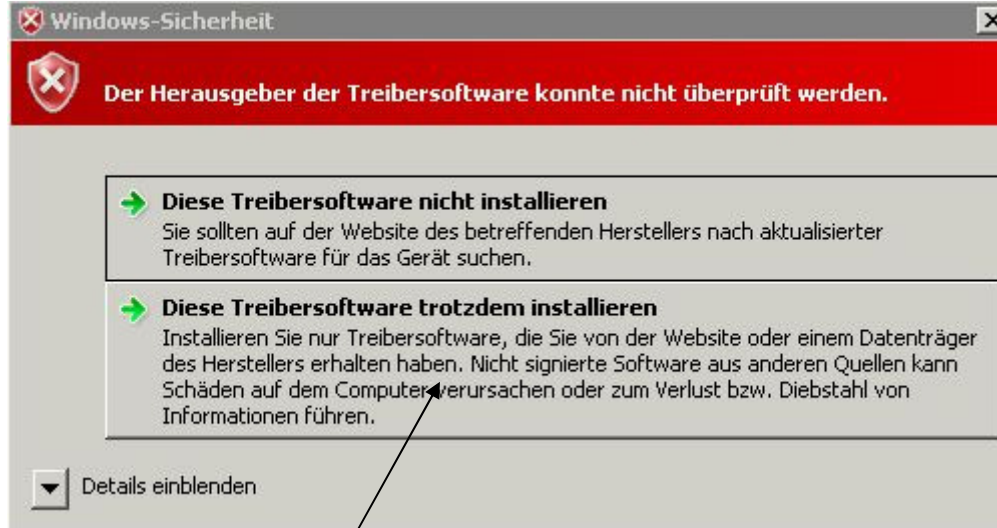
Open the „*.inf“ file



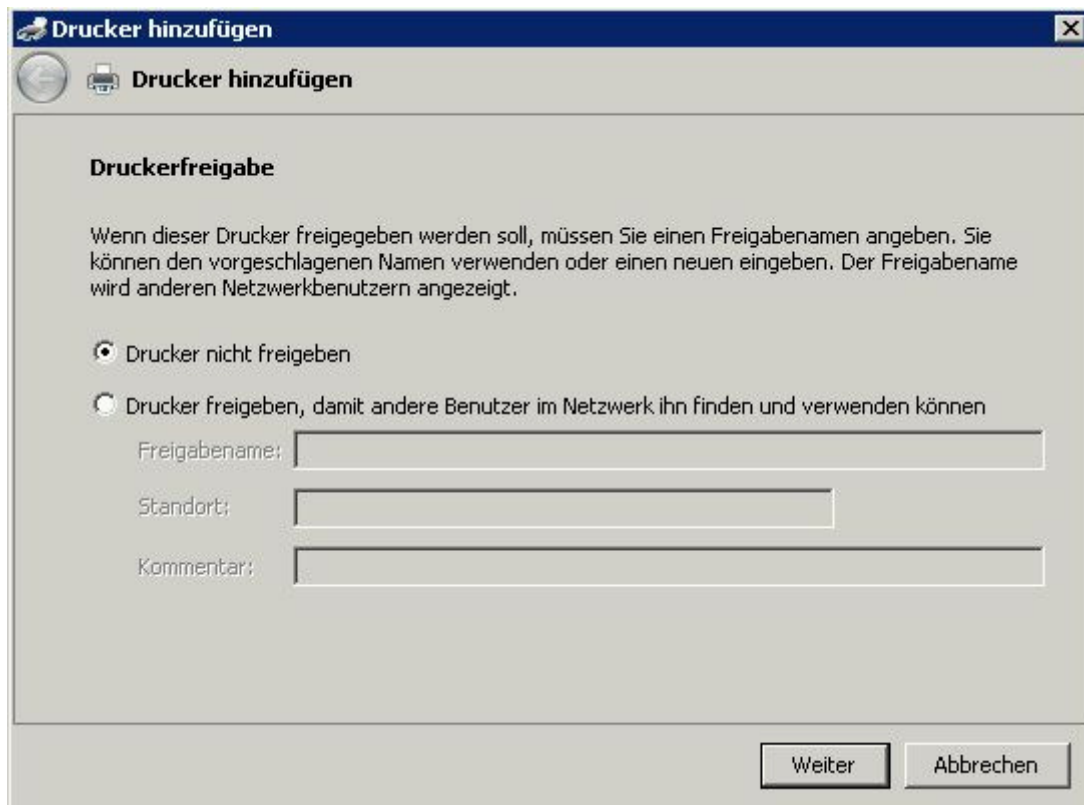
Select a printer and selct next



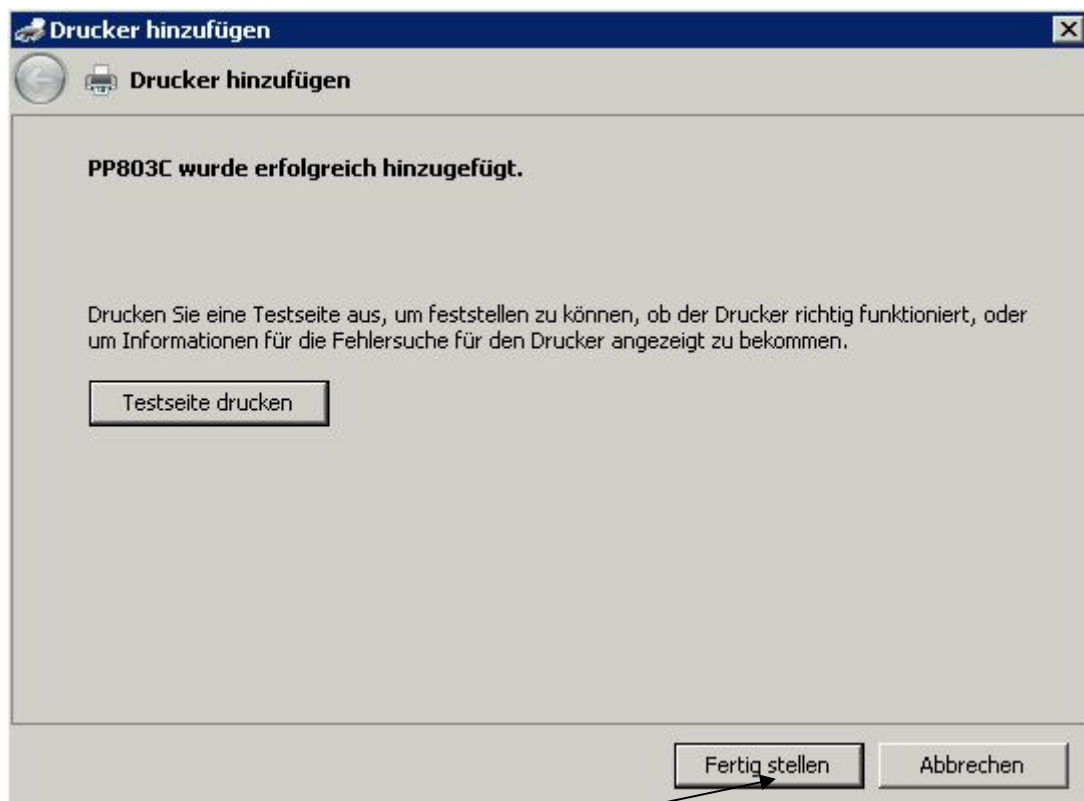
next



Ignore driver certification and install

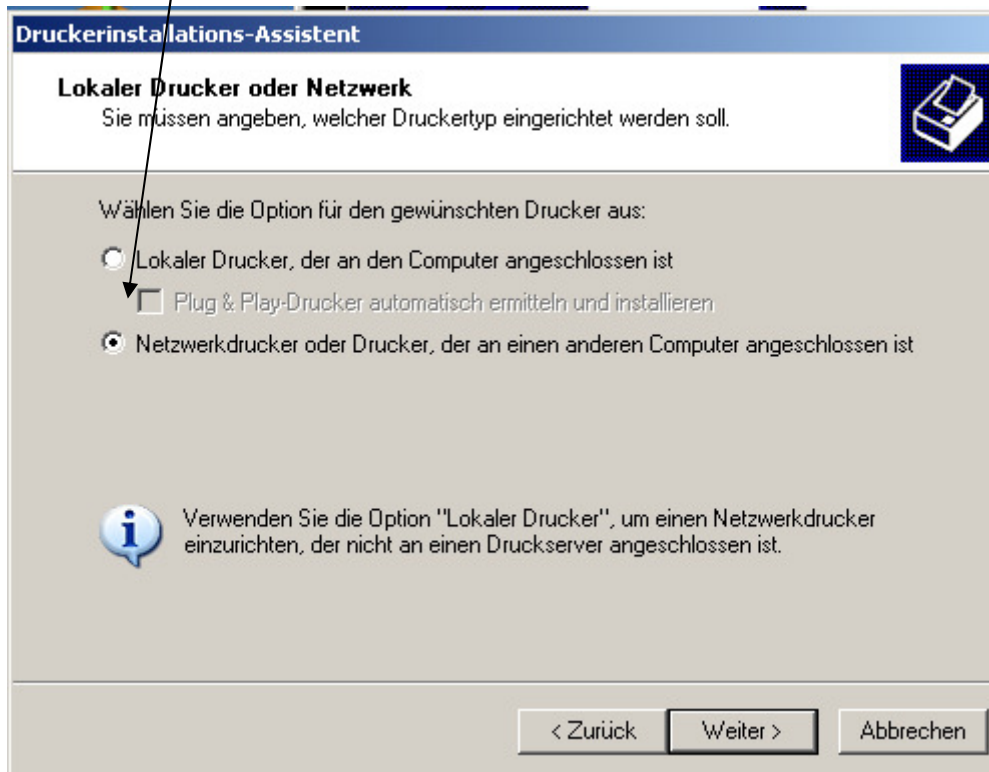


next

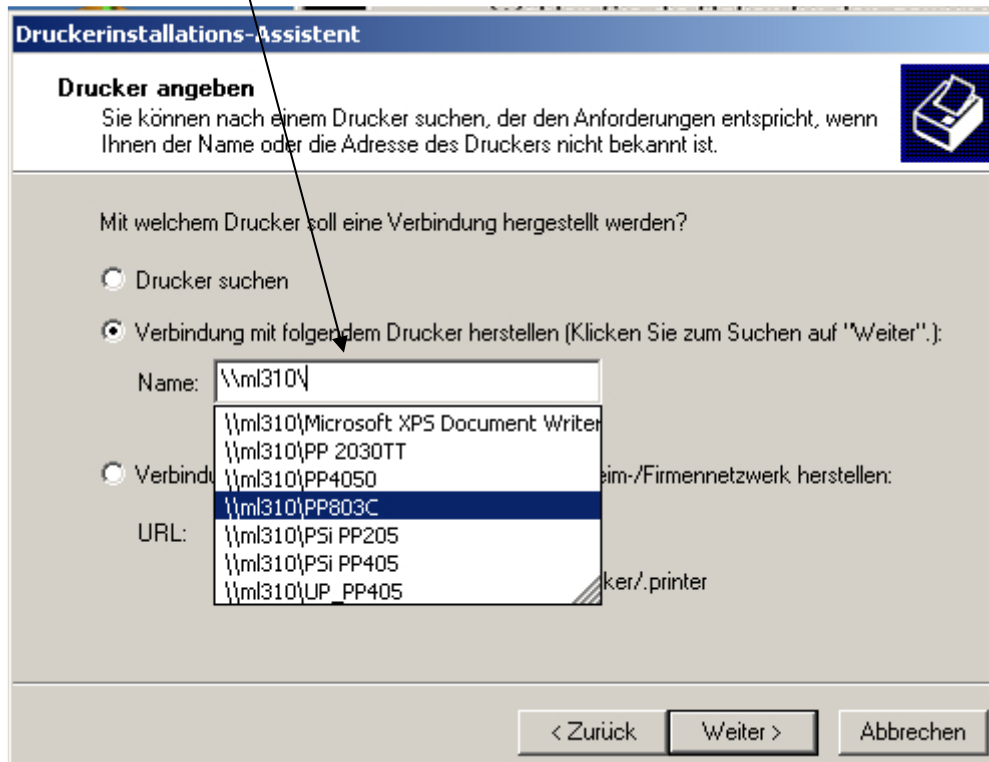


Make ready

Log on a 32 bit client unpack and install a the newly network printer.

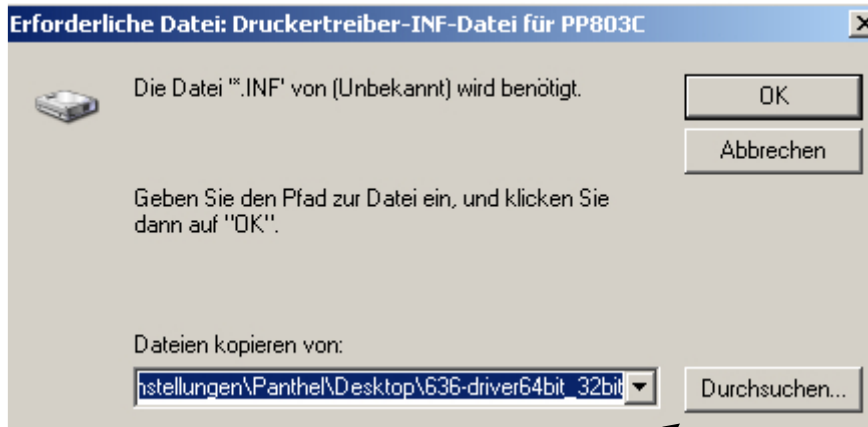
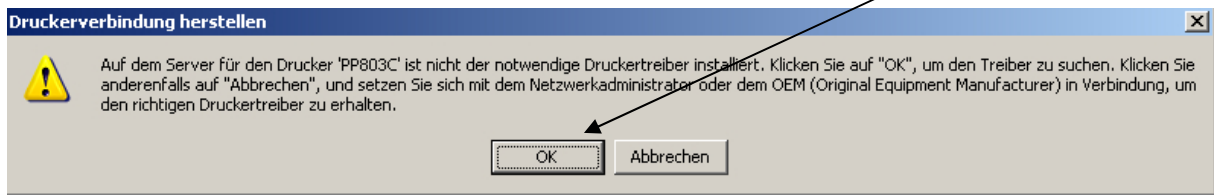


Use the path of your 2008 server

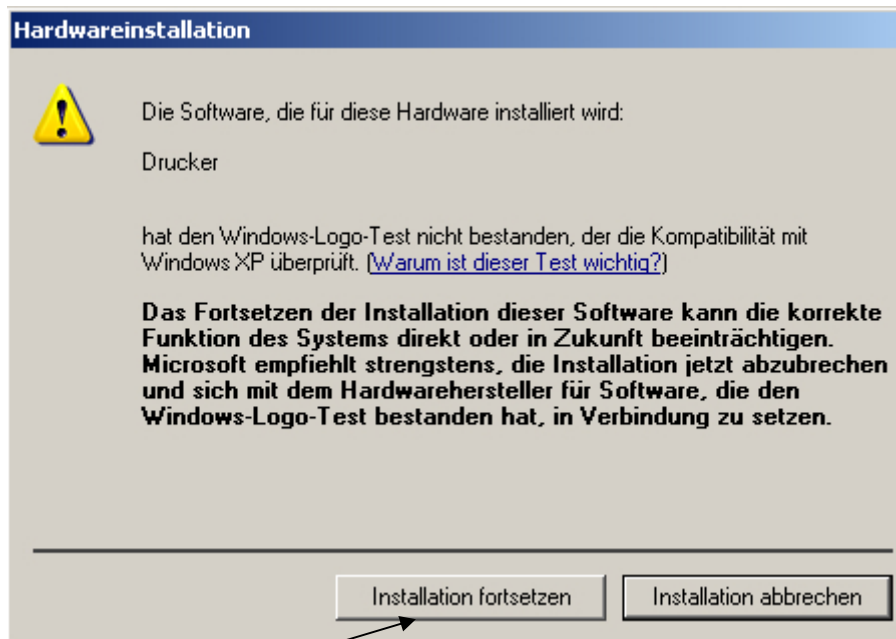


next

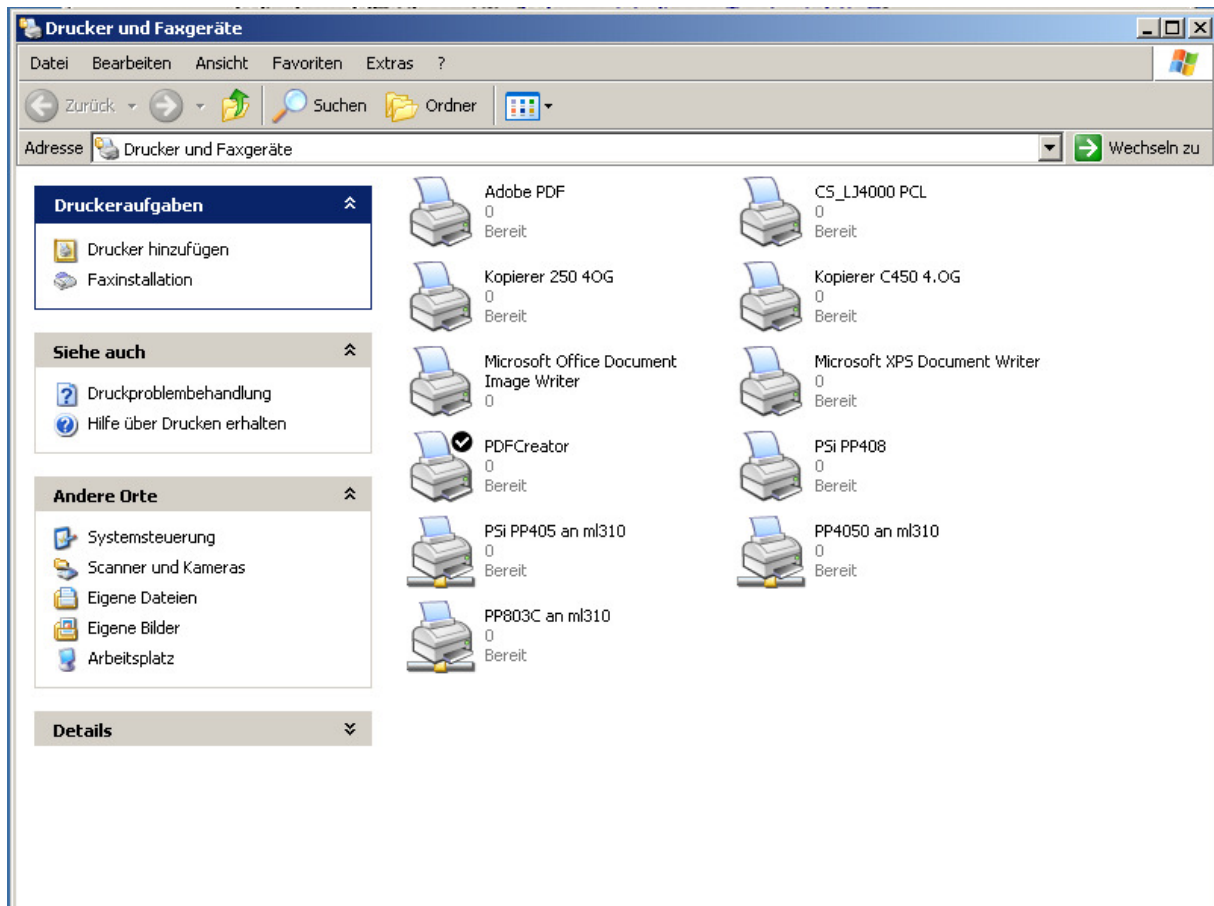
the server does not have a 32 bit is a message to confirm this with OK



Searching for the path of the unpacked driver package



Install

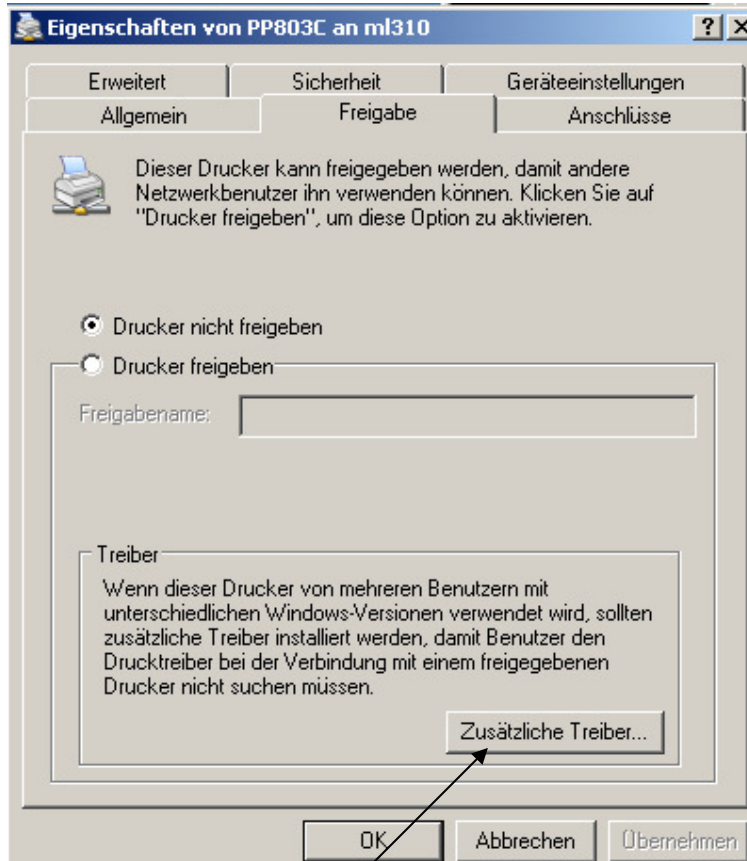
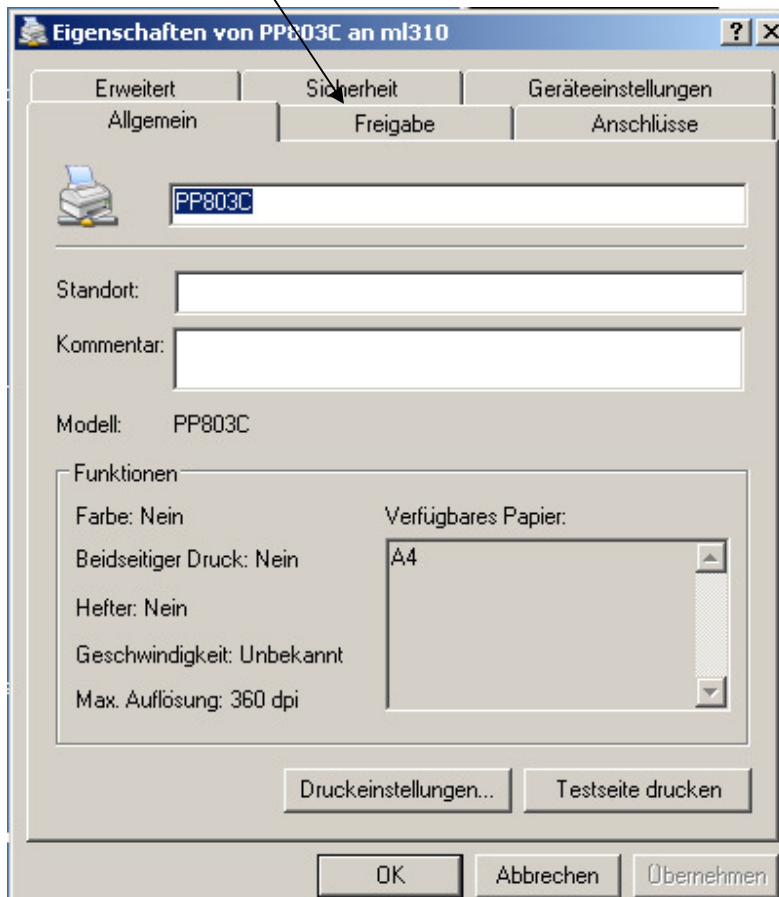


The printer is now locally installed on 32 bit

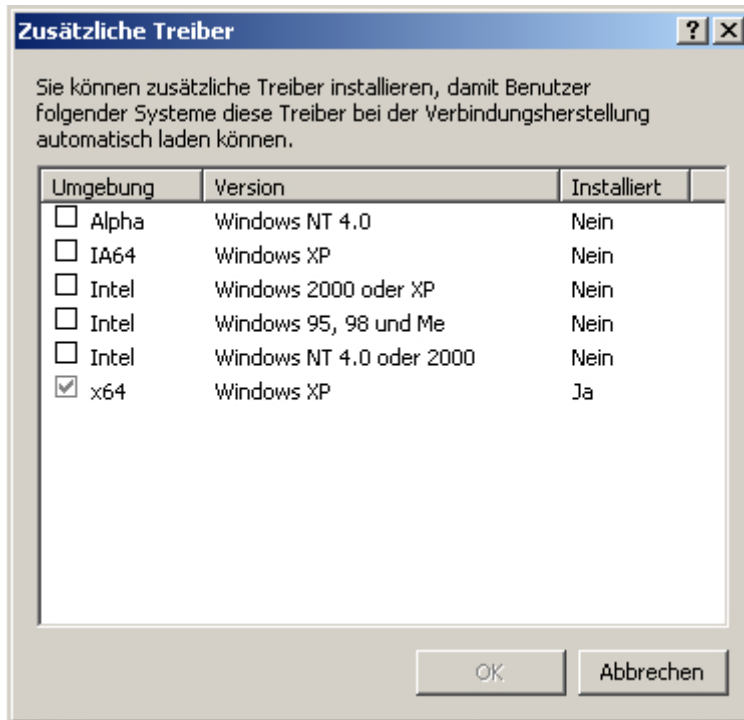


Call with the right mouse button properties

select Sharing



additional driver

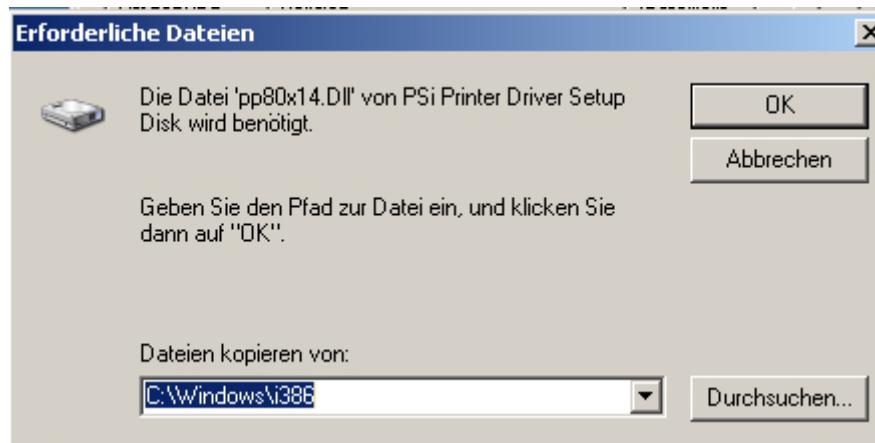


Select Intel Windows 2000 or XP

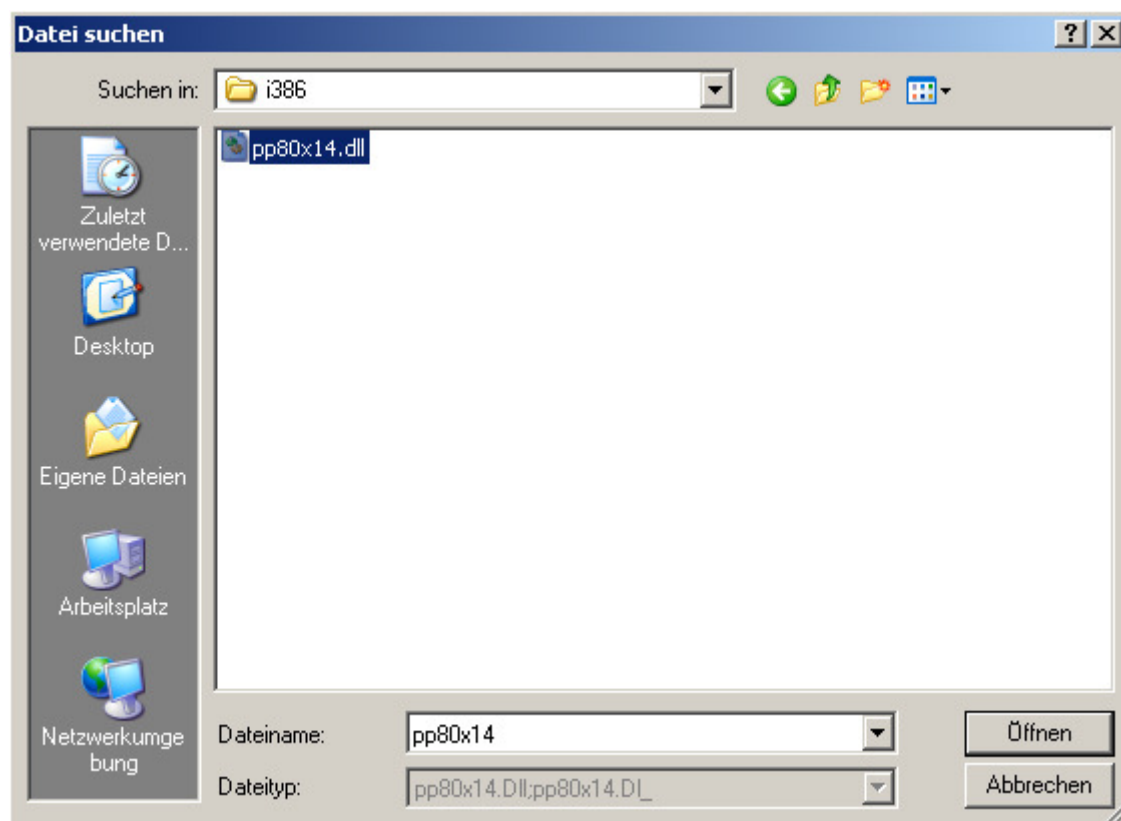
<input type="checkbox"/> Alpha	Windows NT 4.0	Nein
<input type="checkbox"/> IA64	Windows XP	Nein
<input checked="" type="checkbox"/> Intel	Windows 2000 oder XP	Nein
<input type="checkbox"/> Intel	Windows 95, 98 und Me	Nein
<input type="checkbox"/> Intel	Windows NT 4.0 oder 2000	Nein
<input checked="" type="checkbox"/> x64	Windows XP	Ja



Install next

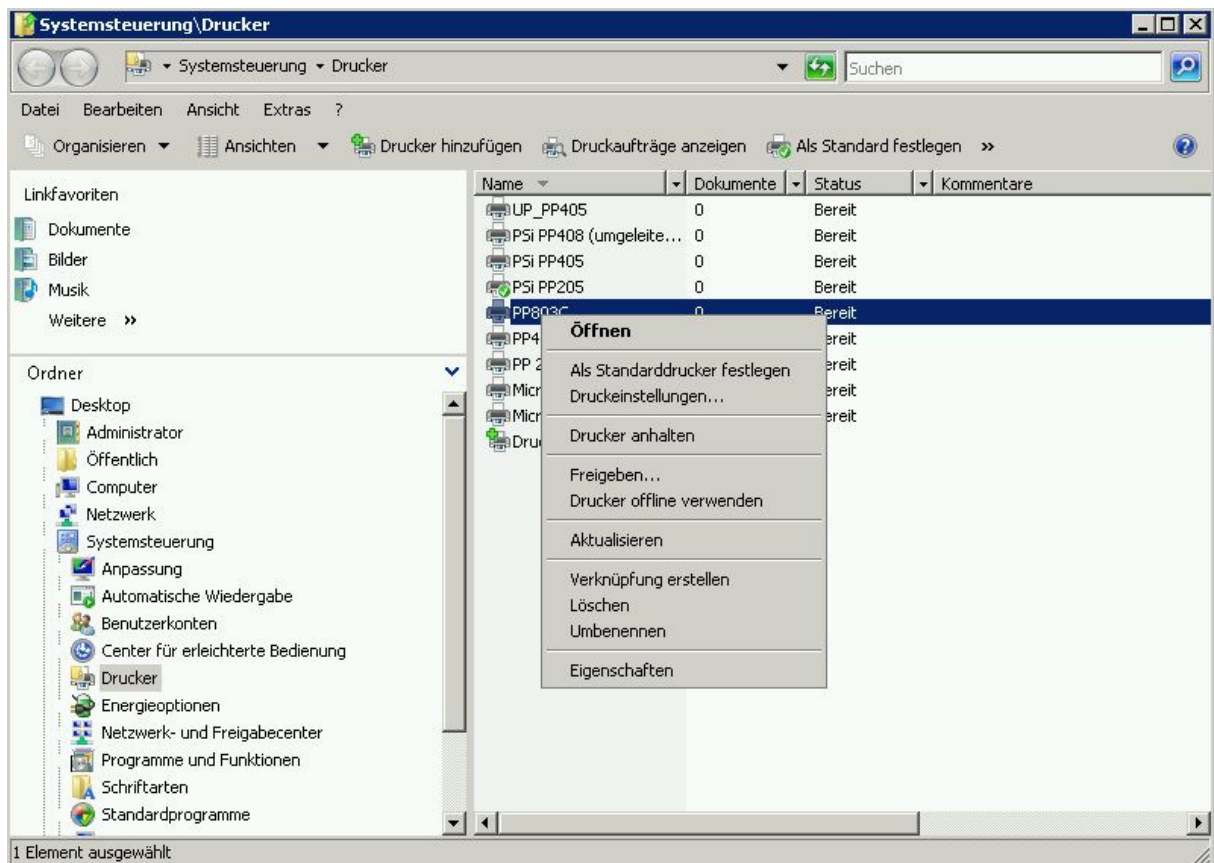


Searching for the path of the unpacked driver package

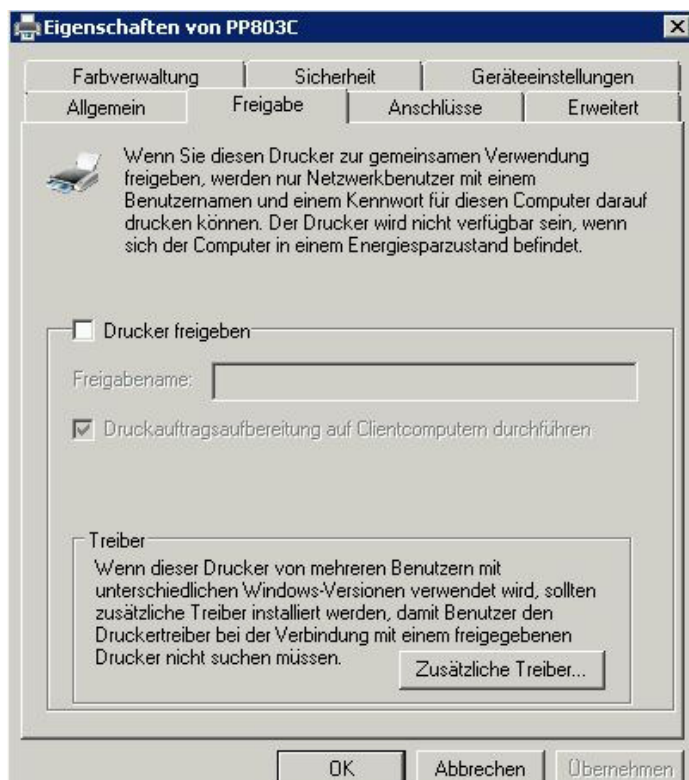


Specify the required sub-i386 "DLL". The 32-bit drivers will now be transferred to Windows Server 2008.

Close all windows and log on the server



Network printer with right-click Properties / release and additional drivers





X86 is now active for this printer. All other clients can now be installed directly.